

CONNECTMT APPLICATION WEBINAR



AGENDA

Website Orientation

Map Orientation

Registering with website

Online Application

Application Guide

Timeline

Online Challenge Process

Questions and Answers



Slide 1

Website Orientation



<https://connectmt.mt.gov/>



DEPARTMENT OF ADMINISTRATION

Broadband - Connect MT and Communications Advisory Commission

The 2021 Legislature passed and Governor Gianforte signed SB297 creating the ConnectMT Act. The Department of Administration (DOA) is responsible for establishing and administering the broadband infrastructure deployment program. The Department will be responsible for receiving and reviewing responsive proposals and awarding contracts. Before awarding any contracts, contracts will be reviewed by the Communications Advisory Commission created by HB632 to oversee Montana's American Rescue Plan Act dollars. The Governor will then approve any proposal recommended for funding by the Department. The Communications Commission's meetings will be noticed on this website.

Advisory Commission Members

- Senators Dan Saloman
- Jason Ellsworth
- Janet Ellis
- Representatives Mike Hopkins
- Ed Bultrey
- Katie Sullivan
- Director Misty Ann Giles
- Director Scott Osterman
- Director Scott Sales

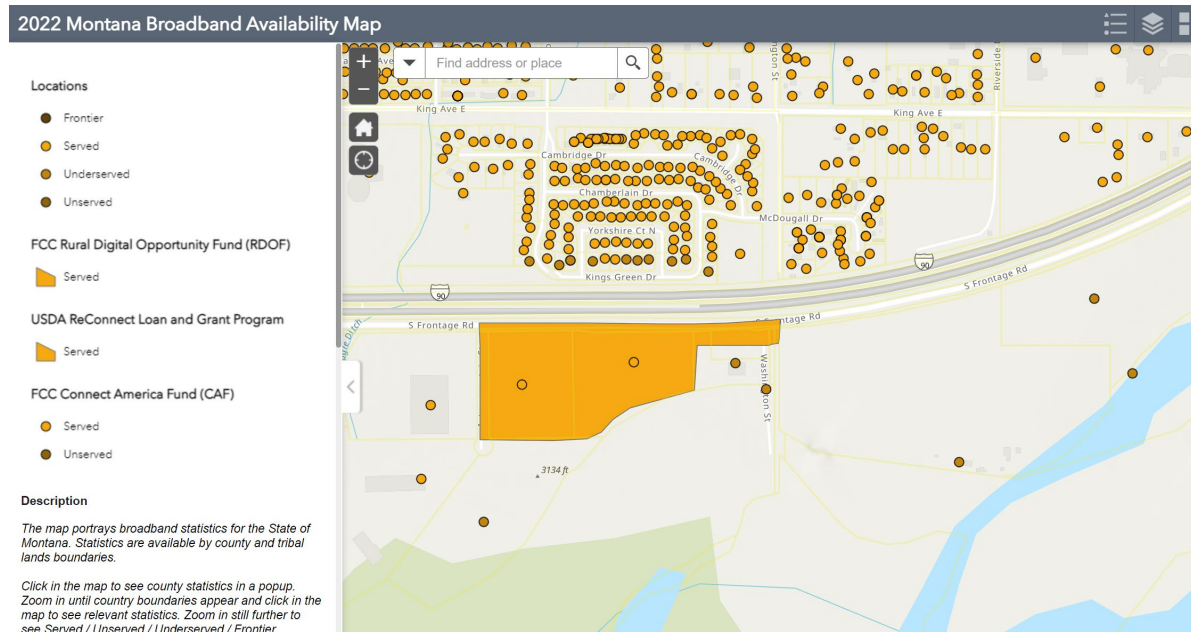


Slide 2

Website includes:

- FAQs
- Contact information
- Information about the statewide broadband map, federal resources, announcements, events, webinars, forms, and guides
- Application link and guidance
- Project challenge process
- Awards
- Auditing and reporting

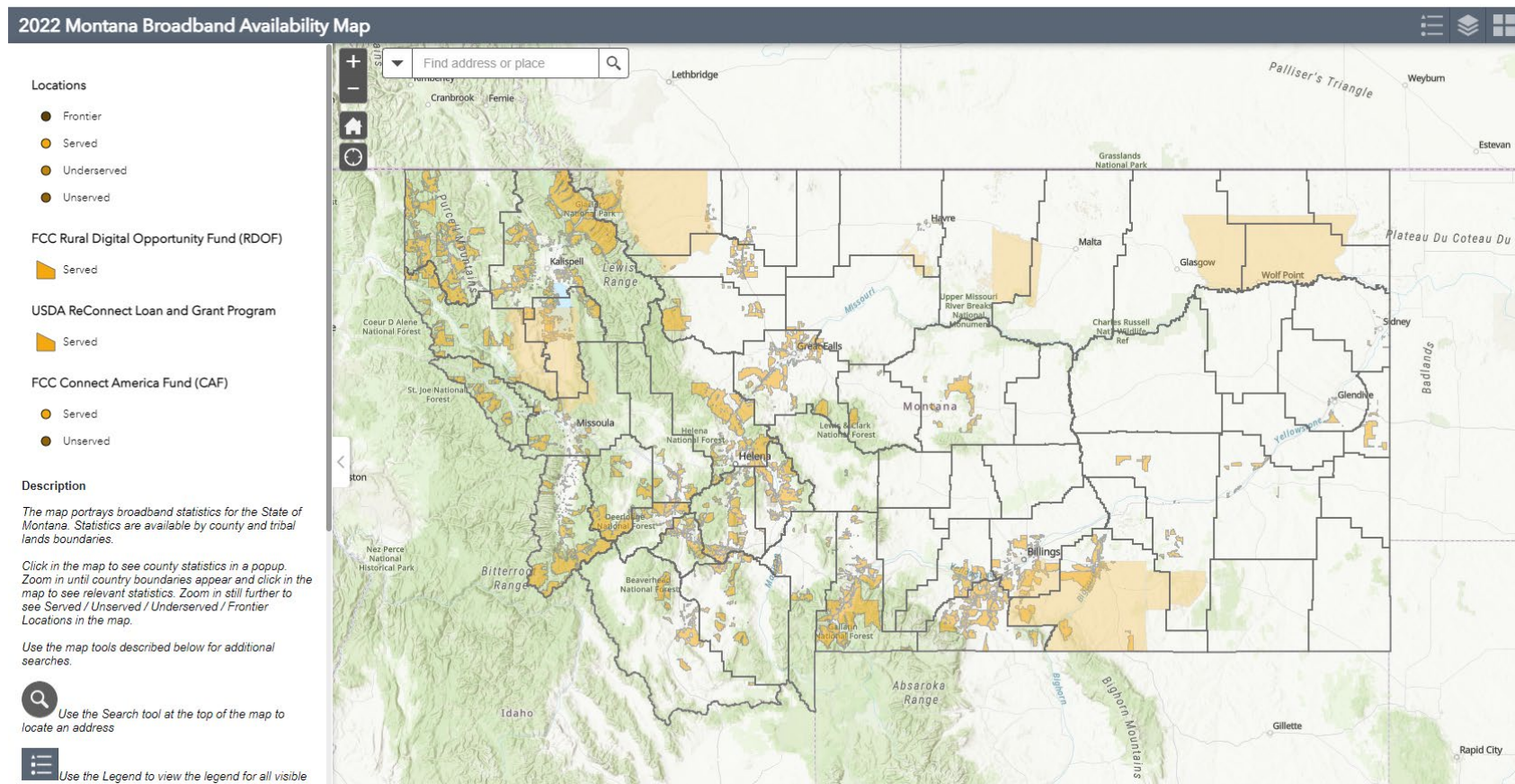
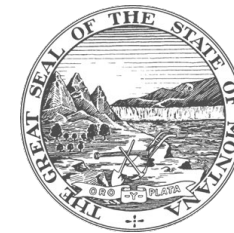
Map Orientation



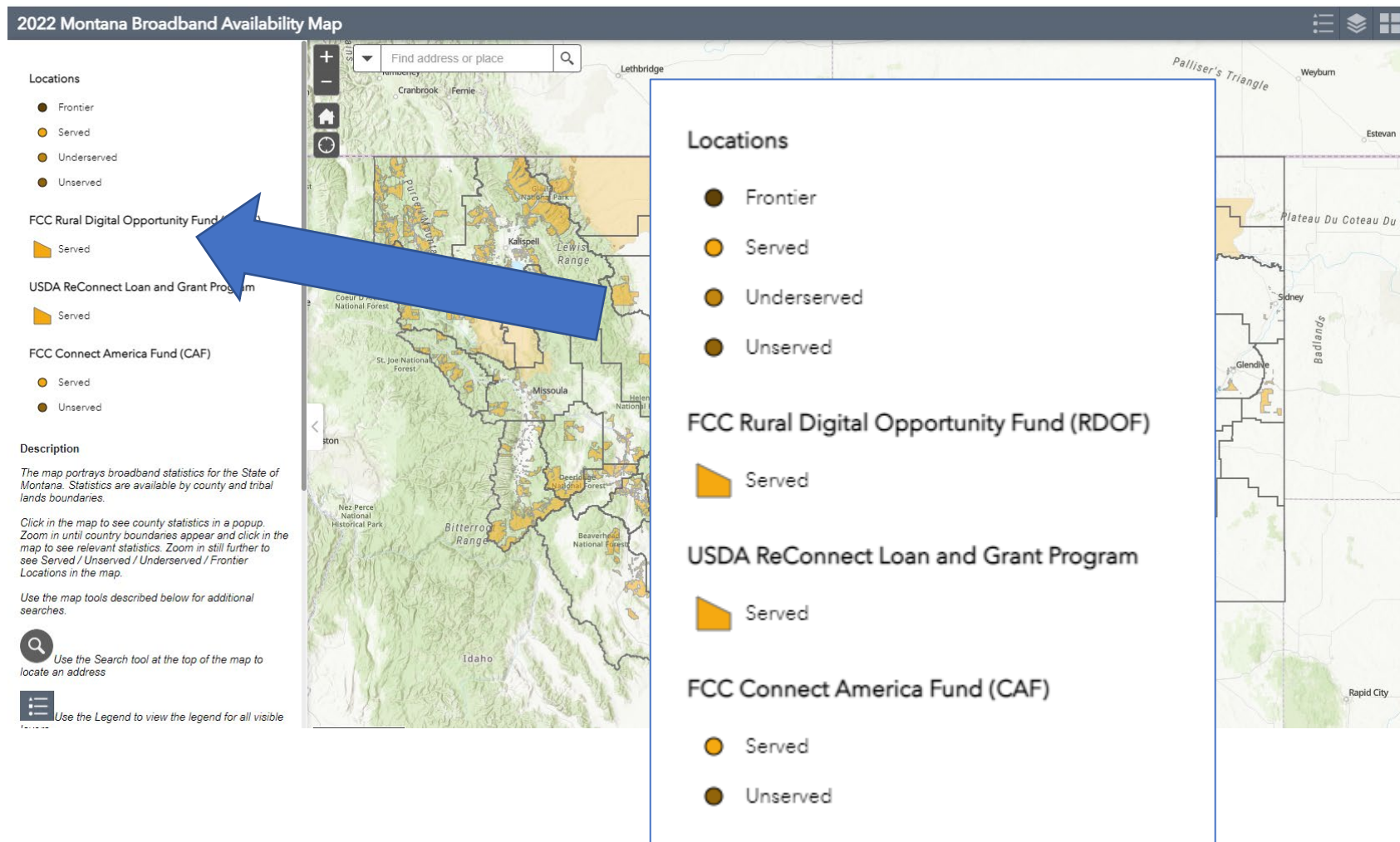
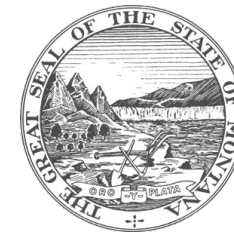
Slide 3

- The State of Montana has selected LightBox to create broadband serviceable location analytics and mapping capabilities for the state.
- LightBox offered Montana an opportunity to get a precise accounting and assessment of the current landscape when it comes to broadband
- Georgia and Alabama have already leveraged LightBox data to create highly accurate broadband serviceable location mapping, amid the Federal Government's push for greater digital equality

2022 Montana Broadband Availability Map



2022 Montana Broadband Availability Map





2022 Montana Broadband Availability Map

2022 Montana Broadband Availability Map

Find address or place

Locations

- Frontier
- Served
- Underserved
- Unserved

FCC Rural Digital Opportunity Fund (RDOF)

- Served

USDA ReConnect Loan and Grant Program

- Served

FCC Connect America Fund (CAF)

- Served
- Unserved

Description

The map portrays broadband statistics for the State of Montana. Statistics are available by county and tribal lands boundaries.

Click in the map to see county statistics in a popup. Zoom in until county boundaries appear and click in the map to see relevant statistics. Zoom in still further to see Served / Unserved / Underserved / Frontier Locations in the map.

Use the map tools described below for additional searches.

Use the Search tool at the top of the map to locate an address

Use the Legend to view the legend for all visible layers

Description

The map portrays broadband statistics for the State of Montana. Statistics are available by county and tribal lands boundaries.

Click in the map to see county statistics in a popup. Zoom in until county boundaries appear and click in the map to see relevant statistics. Zoom in still further to see Served / Unserved / Underserved / Frontier Locations in the map.

Use the map tools described below for additional searches.

Use the Search tool at the top of the map to locate an address

Use the Legend to view the legend for all visible layers

Use the Layer List to turn data layers on/off

As per advertised maxspeed values (Mbps down/up):

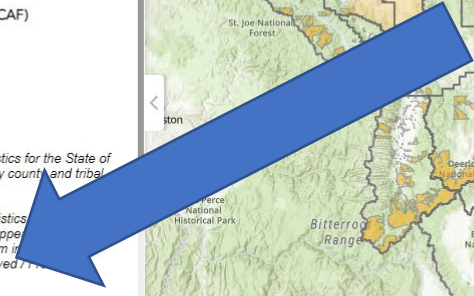
- "Served" = locations where maxspeed $\geq 100/20$ Mbps down/up
- "Underserved" = locations where maxspeed $\geq 25/10$ - $< 100/20$
- "Unserved" = locations where maxspeed $\geq 4/1$ - $< 25/10$
- "Frontier" = locations where maxspeed $< 4/1$

The map depicts access to broadband, not subscription to broadband.

Broadband data is provided by the various Internet Service Providers of Montana.

Boundaries and/or locations have to been provided to illustrate current federal government broadband investments:

- FCC Rural Digital Opportunity Fund (RDOF)
- USDA ReConnect Loan and Grant Program
- FCC Connect America Fund (CAF)



2022 Montana Broadband Availability Map



2022 Montana Broadband Availability Map

Locations

- Frontier
- Served
- Underserved
- Unserved

FCC Rural Digital Opportunity Fund (RDOF)

- Served

USDA ReConnect Loan and Grant Program

- Served

FCC Connect America Fund (CAF)

- Served
- Unserved

Description

The map portrays broadband statistics for the State of Montana. Statistics are available by county and tribal lands boundaries.

Click in the map to see county statistics in a popup. Zoom in until county boundaries appear and click in the map to see relevant statistics. Zoom in still further to see Served / Unserved / Underserved / Frontier Locations in the map.

Use the map tools described below for additional searches.

Use the Search tool at the top of the map to locate an address

Use the Legend to view the legend for all visible

2022 Montana Broadband Availability Map



2022 Montana Broadband Availability Map

Find address or place

Locations

- Frontier
- Served
- Underserved
- Unserved

FCC Rural Digital Opportunity Fund (RDOF)

- Served

USDA ReConnect Loan and Grant Program

- Served

FCC Connect America Fund (CAF)

- Served
- Unserved

Description

The map portrays broadband statistics for the State of Montana. Statistics are available by county and tribal lands boundaries.

Click in the map to see county statistics in a popup. Zoom in until county boundaries appear and click in the map to see relevant statistics. Zoom in still further to see Served / Unserved / Underserved / Frontier Locations in the map.

Use the map tools described below for additional searches.

Use the Search tool at the top of the map to locate an address

Use the Legend to view the legend for all visible

Legend

Counties

Tribal Lands

FCC Rural Digital Opportunity Fund (RDOF)

Served

2022 Montana Broadband Availability Map



2022 Montana Broadband Availability Map

Find address or place

Locations

- Frontier
- Served
- Underserved
- Unserved

FCC Rural Digital Opportunity Fund (RDOF)

- Served

USDA ReConnect Loan and Grant Program

- Served

FCC Connect America Fund (CAF)

- Served
- Unserved

Description

The map portrays broadband statistics for the State of Montana. Statistics are available by county and tribal lands boundaries.

Click in the map to see county statistics in a popup. Zoom in until county boundaries appear and click in the map to see relevant statistics. Zoom in still further to see Served / Unserved / Underserved / Frontier Locations in the map.

Use the map tools described below for additional searches.

- Use the Search tool at the top of the map to locate an address
- Use the Legend to view the legend for all visible layers

Layer List

Layers

- Locations
- Counties
- Tribal Lands
- Building Footprints
- Parcel Boundaries
- FCC Rural Digital Opportunity Fund (RDOF)
- USDA ReConnect Loan and Grant Program
- FCC Connect America Fund (CAF)

2022 Montana Broadband Availability Map



2022 Montana Broadband Availability Map

Find address or place

Locations

- Frontier
- Served
- Underserved
- Unserved

FCC Rural Digital Opportunity Fund (RDOF)

- Served

USDA ReConnect Loan and Grant Program

- Served

FCC Connect America Fund (CAF)

- Served
- Unserved

Description

The map portrays broadband statistics for the State of Montana. Statistics are available by county and tribal lands boundaries.

Click in the map to see county statistics in a popup. Zoom in until county boundaries appear and click in the map to see relevant statistics. Zoom in still further to see Served / Unserved / Underserved / Frontier Locations in the map.

Use the map tools described below for additional searches.

Use the Search tool at the top of the map to locate an address

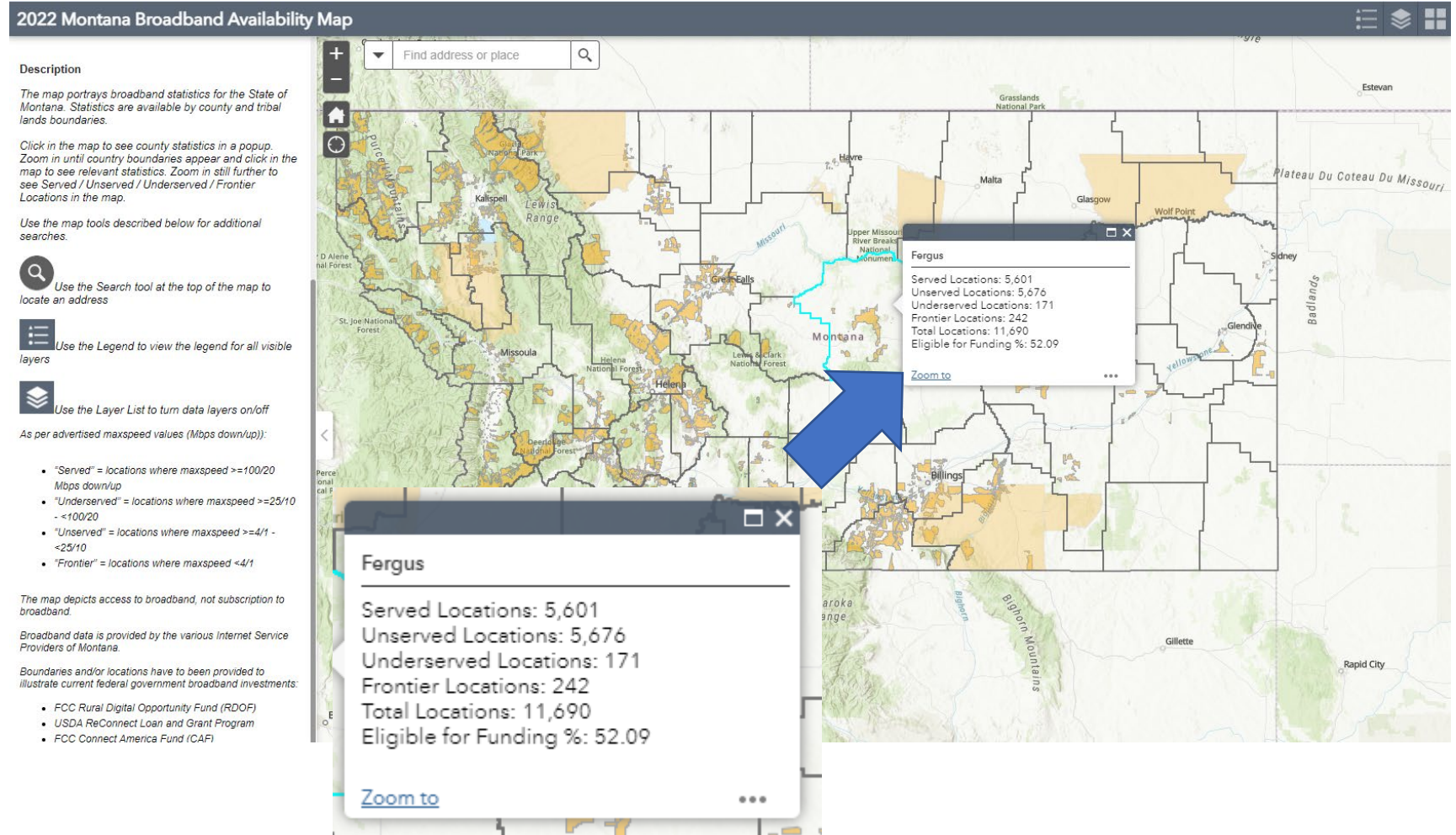
Use the Legend to view the legend for all visible

Basemap Gallery

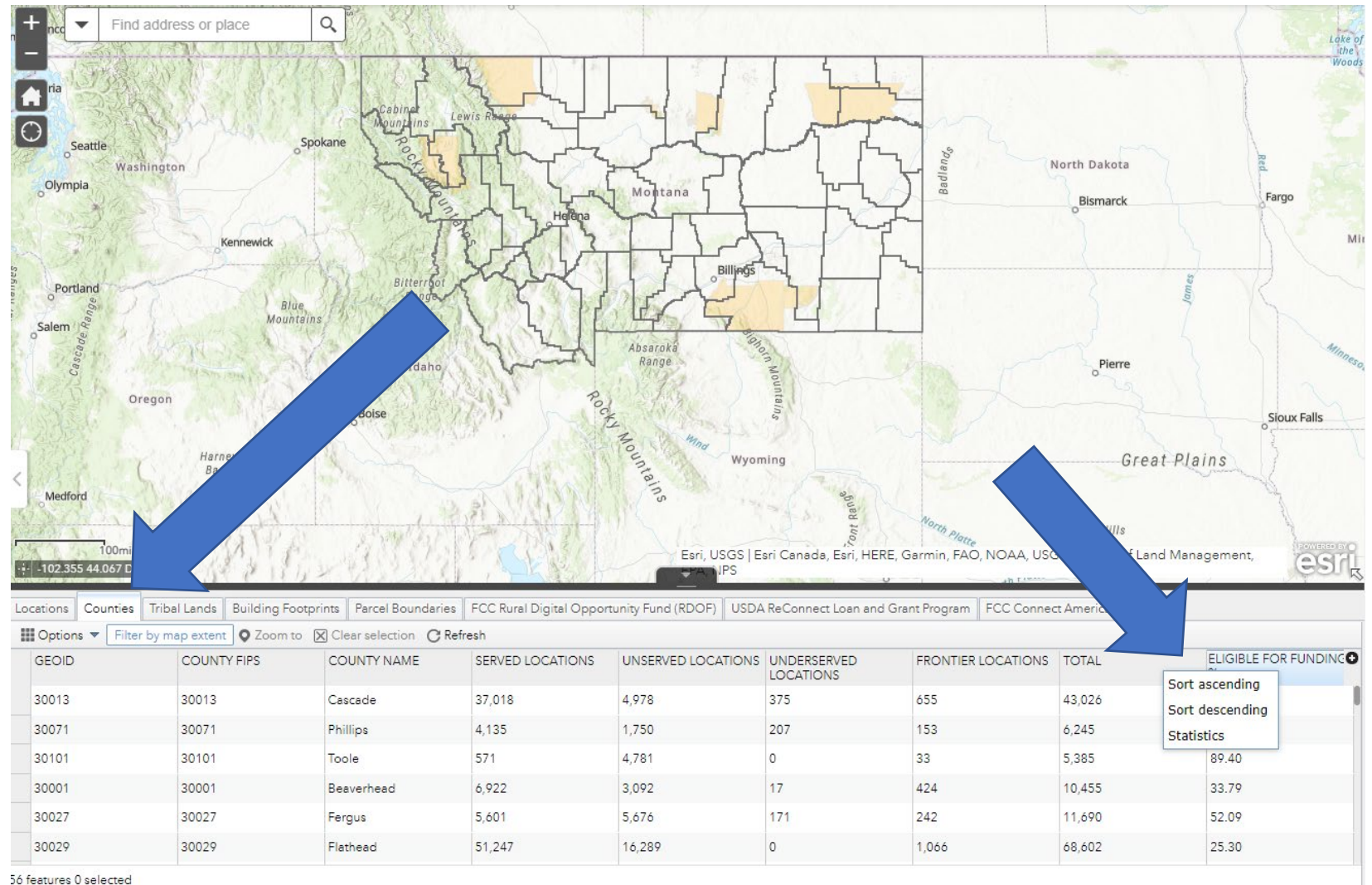
- Imagery
- Imagery with Labels
- Light Gray Canvas
- Terrain with Labels
- Topographic

Map features include: Lethbridge, Cranbrook, Fernie, Grasslands National Park, Malta, Glasgow, Plateau Du Coteau Du N, Estevan, Charles Russell Nat Wildlife Ref, Sidney, Badlands, Yellowstone, Glendive, Big Horn Mountains, Gillette, Rapid City, and Pailiser's Triangle.

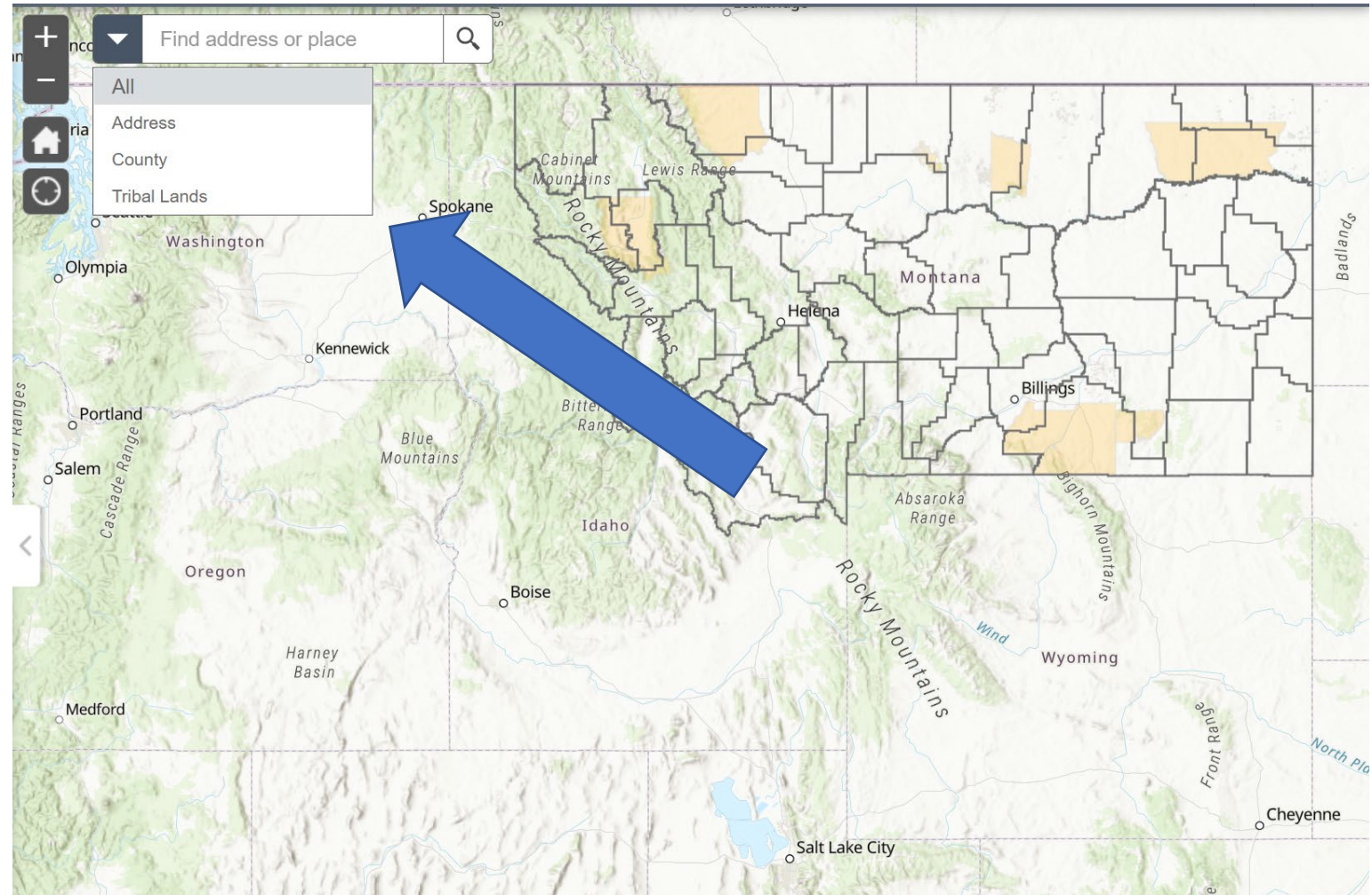
2022 Montana Broadband Availability Map



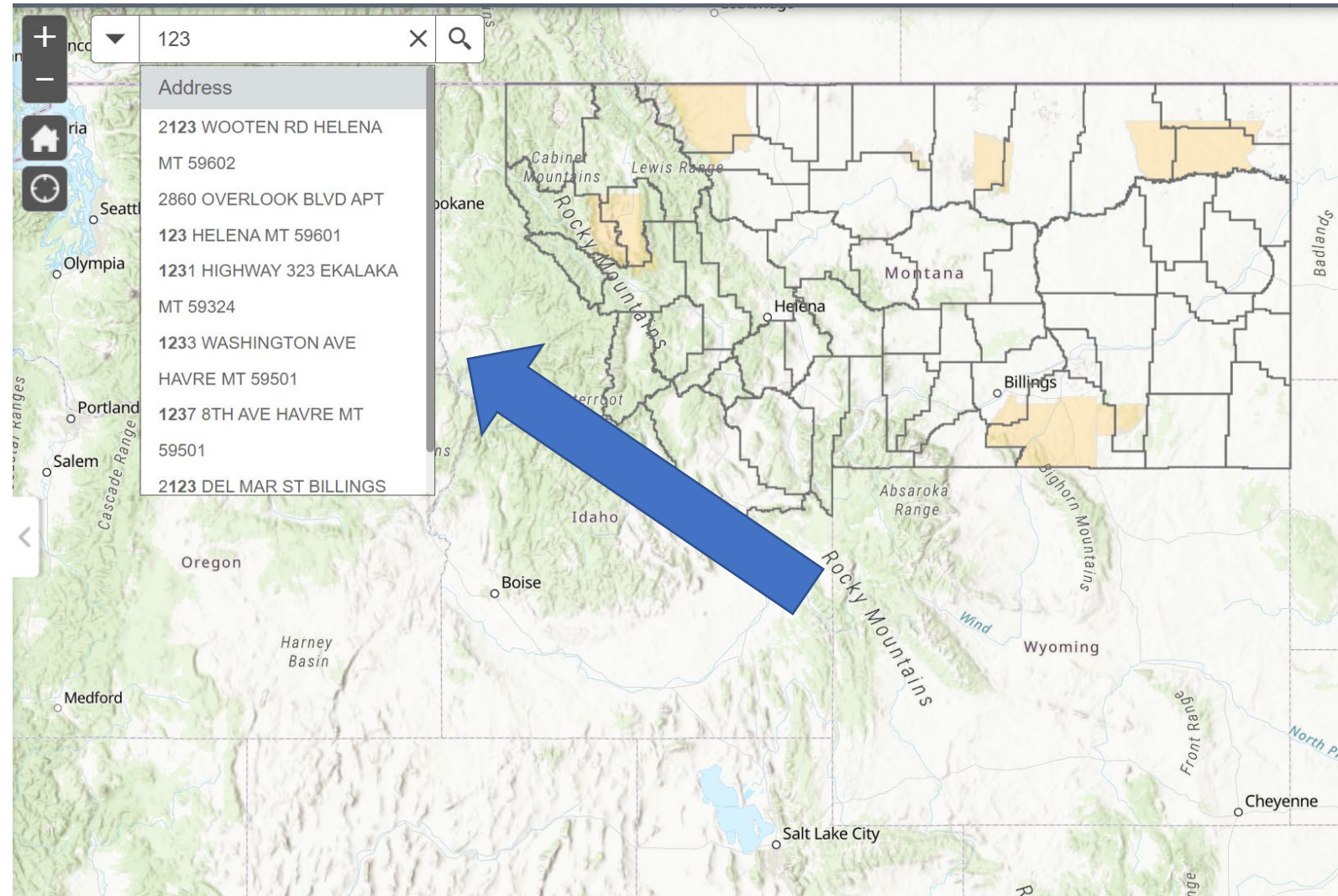
2022 Montana Broadband Availability Map



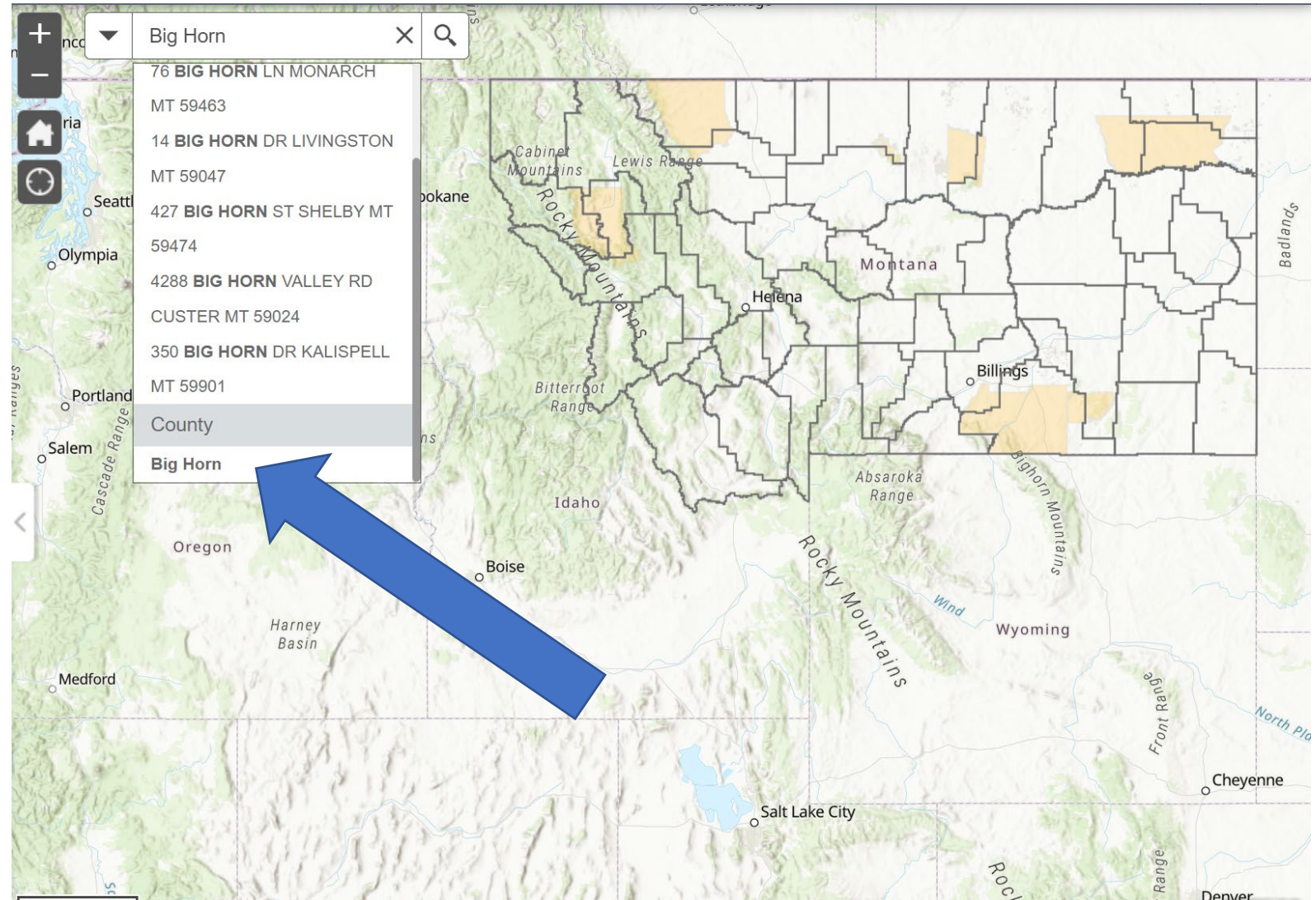
2022 Montana Broadband Availability Map



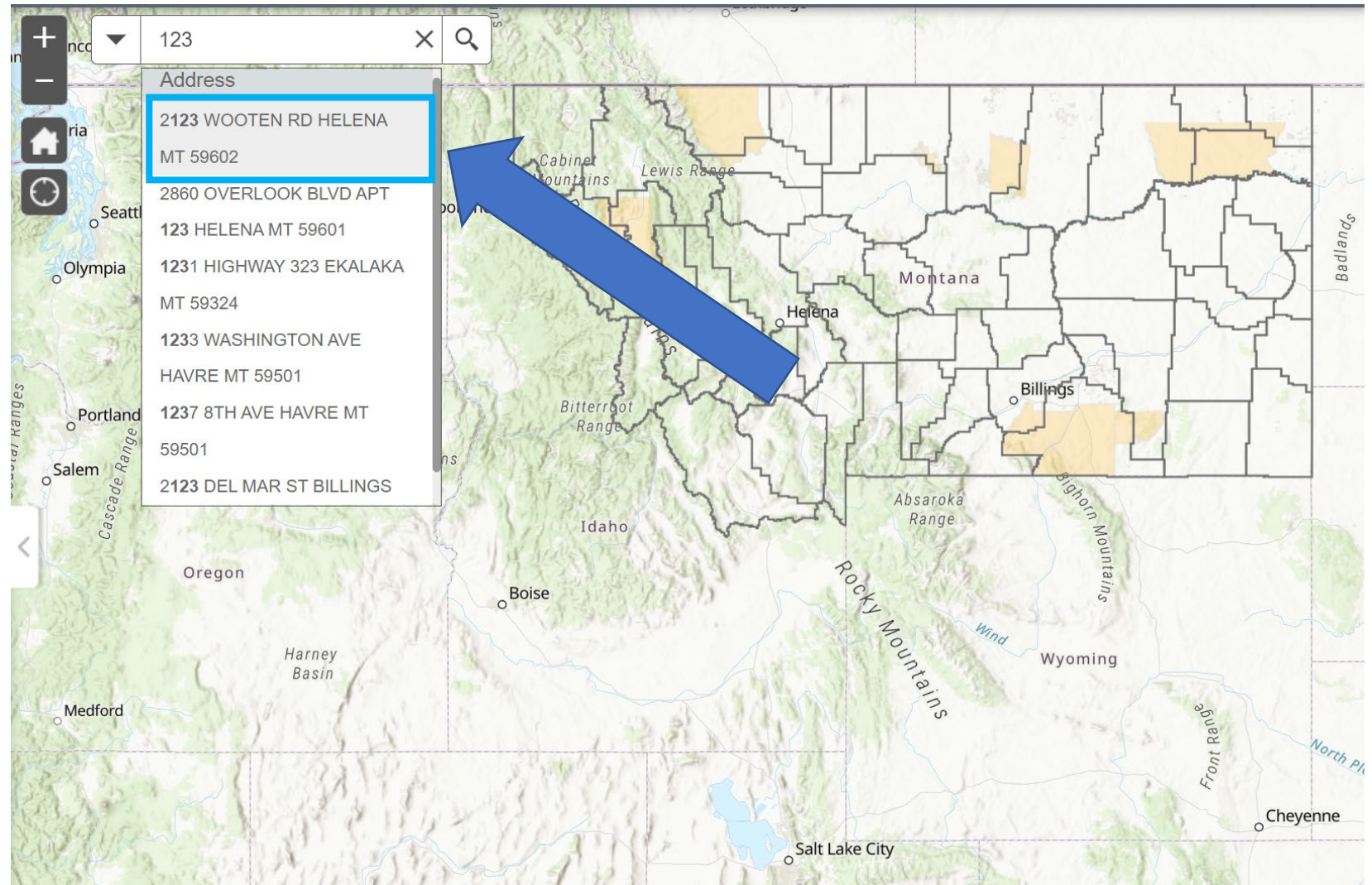
2022 Montana Broadband Availability Map



2022 Montana Broadband Availability Map



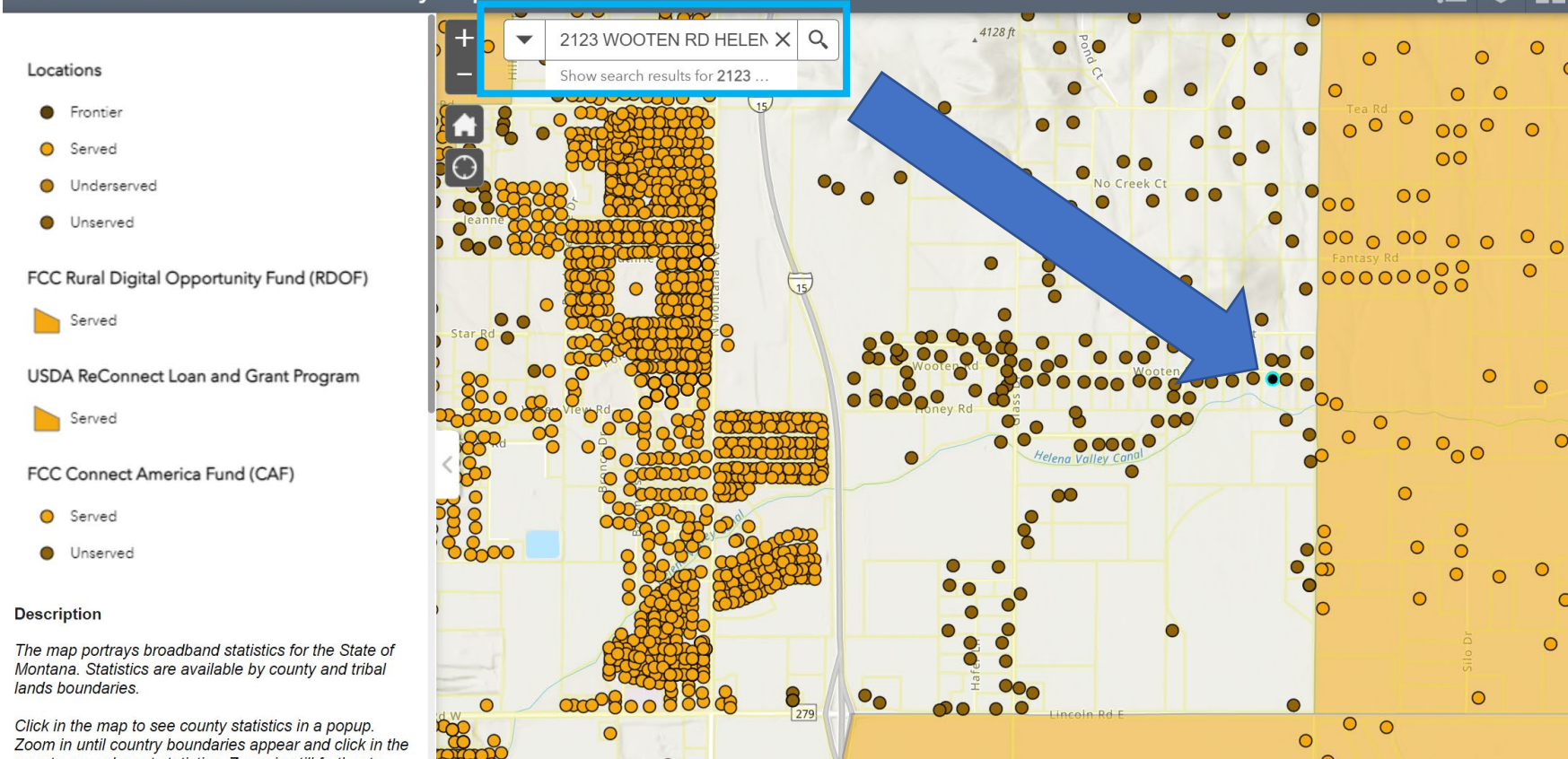
2022 Montana Broadband Availability Map



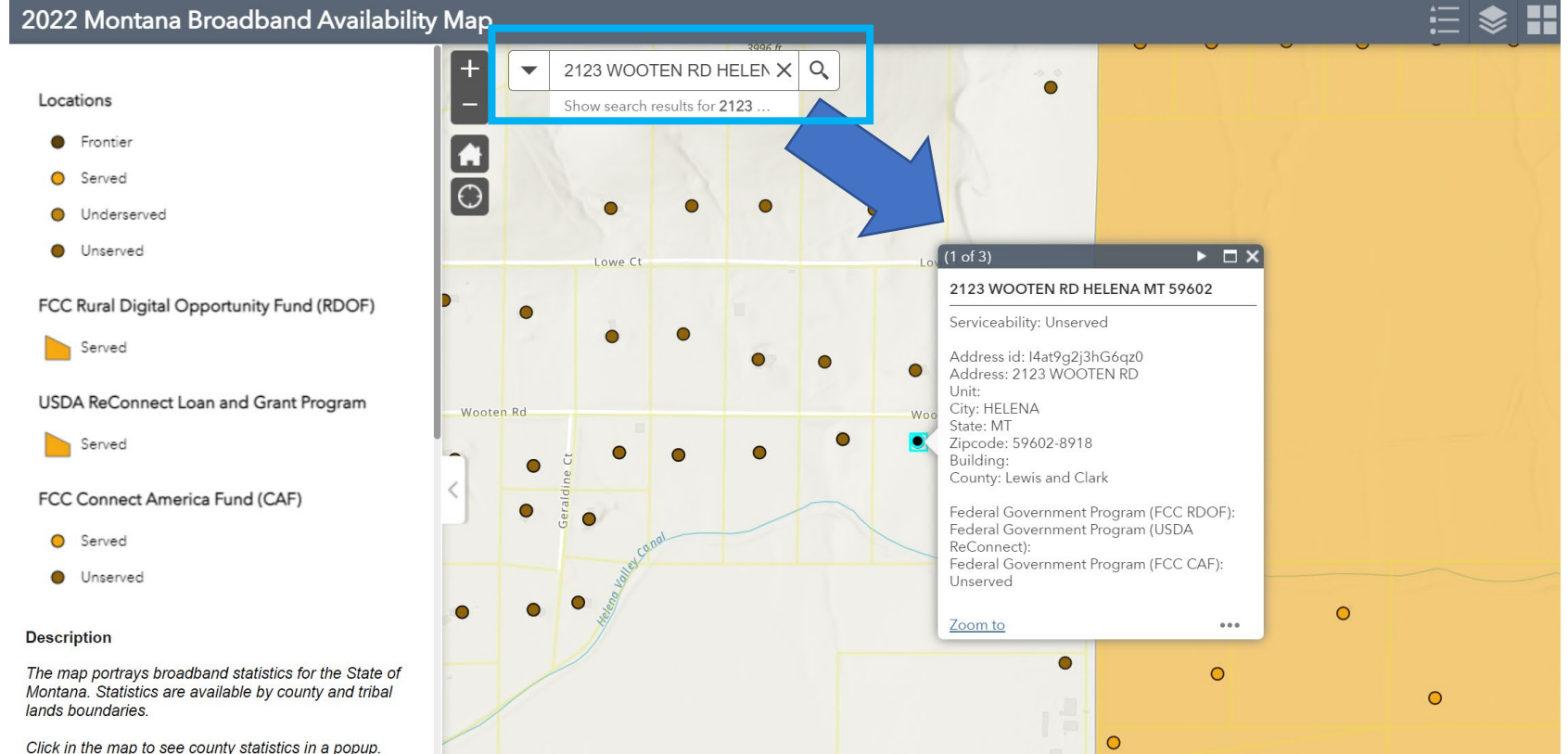
2022 Montana Broadband Availability Map



2022 Montana Broadband Availability Map



2022 Montana Broadband Availability Map



2022 Montana Broadband Grant Applicant / Challenge Map



2022 Montana Broadband Grant Applicant/Challenge Tool

Find address or place

Locations

- Frontier
- Served
- Underserved
- Unserved

FCC Rural Digital Opportunity Fund (RDOF)

- Served

USDA ReConnect Loan and Grant Program

- Served

FCC Connect America Fund (CAF)

- Served
- Unserved

Description

The Montana Broadband Grant Applicant/Challenge tool was created for the Montana ConnectMT program. Additionally, this map includes "served" locations which have been updated based on ISP information or they were awarded with USDA ReConnect, FCC RDOF funding, or CAF funding for broadband.

Query

Search	Results
<input type="radio"/> Search Tribal Lands	
<input type="radio"/> Search Counties	

2022 Montana Broadband Grant Applicant / Challenge Map



2022 Montana Broadband Grant Applicant/Challenge Tool

Locations

- Frontier
- Served
- Underserved
- Unserved

FCC Rural Digital Opportunity Fund (RDOF)

- Served

USDA ReConnect Loan and Grant Program

- Served

FCC Connect America Fund (CAF)

- Served
- Unserved

Description

The Montana Broadband Grant Applicant/Challenge tool was created for the Montana ConnectMT program. Additionally, this map includes "served" locations which have been updated based on ISP information or they were awarded with USDA ReConnect, FCC RDOF funding, or CAF funding for terrestrial based broadband.

2022 Montana Broadband Grant Applicant / Challenge Map



2022 Montana Broadband Grant Applicant/Challenge Tool

Find address or place

Locations

- Frontier
- Served
- Underserved
- Unserved

FCC Rural Digital Opportunity Fund (RDOF)

- Served

USDA ReConnect Loan and Grant Program

- Served

FCC Connect America Fund (CAF)

- Served
- Unserved

Description

The Montana Broadband Grant Applicant/Challenge tool was created for the Montana ConnectMT program. Additionally, this map includes "served" locations which have been updated based on ISP information or they were awarded with USDA ReConnect, FCC RDOF funding, or CAF funding for terrestrial based broadband.

Query

Search Results

Search Counties _Query result

Displayed features: 1/1

Big Horn

- Served Locations: 2,747
- Unserved Locations: 3,088
- Frontier Locations: 709
- Total Locations: 10,093
- Eligible for Funding %: 72.78

2022 Montana Broadband Grant Applicant / Challenge Map



2022 Montana Broadband Grant Applicant/Challenge Tool

Locations

- Frontier
- Served
- Underserved
- Unserved

FCC Rural Digital Opportunity Fund (RDOF)

- Served

USDA ReConnect Loan and Grant Program

- Served

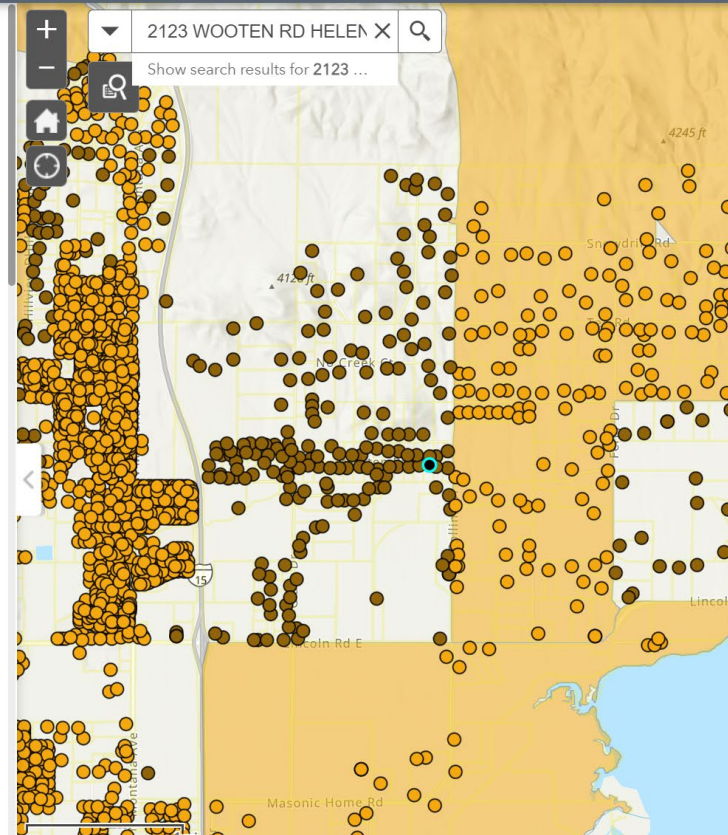
FCC Connect America Fund (CAF)

- Served
- Unserved

Description

The Montana Broadband Grant Applicant/Challenge tool was created for the Montana ConnectMT program. Additionally, this map includes "served" locations which have been updated based on ISP information or they were awarded with USDA ReConnect, FCC RDOF funding, or CAF funding for terrestrial based broadband.

In order for a location to be eligible for the ConnectMT



Select Eligible Locations

Select

Clear

Layer

Locations 0

2022 Montana Broadband Grant Applicant / Challenge Map



2022 Montana Broadband Grant Applicant/Challenge Tool

Locations

- Frontier
- Served
- Underserved
- Unserved

FCC Rural Digital Opportunity Fund (RDOF)

- Served

USDA ReConnect Loan and Grant Program

- Served

FCC Connect America Fund (CAF)

- Served
- Unserved

Description

The Montana Broadband Grant Applicant/Challenge tool was created for the Montana ConnectMT program. Additionally, this map includes "served" locations which have been updated based on ISP information or they were awarded with USDA

2123 WOOTEN RD HELEN X

Show search results for 2123 ...

Select Eligible Locations

Select Clear

Layer

Select by rectangle

Select by lasso

Select Eligible Locations

Select Clear

Layer

Select by rectangle

Select by lasso



2022 Montana Broadband Grant Applicant / Challenge Map

2022 Montana Broadband Grant Applicant/Challenge Tool

Locations

- Frontier
- Served
- Underserved
- Unserved

FCC Rural Digital Opportunity Fund (RDOF)

- Served

USDA ReConnect Loan and Grant Program

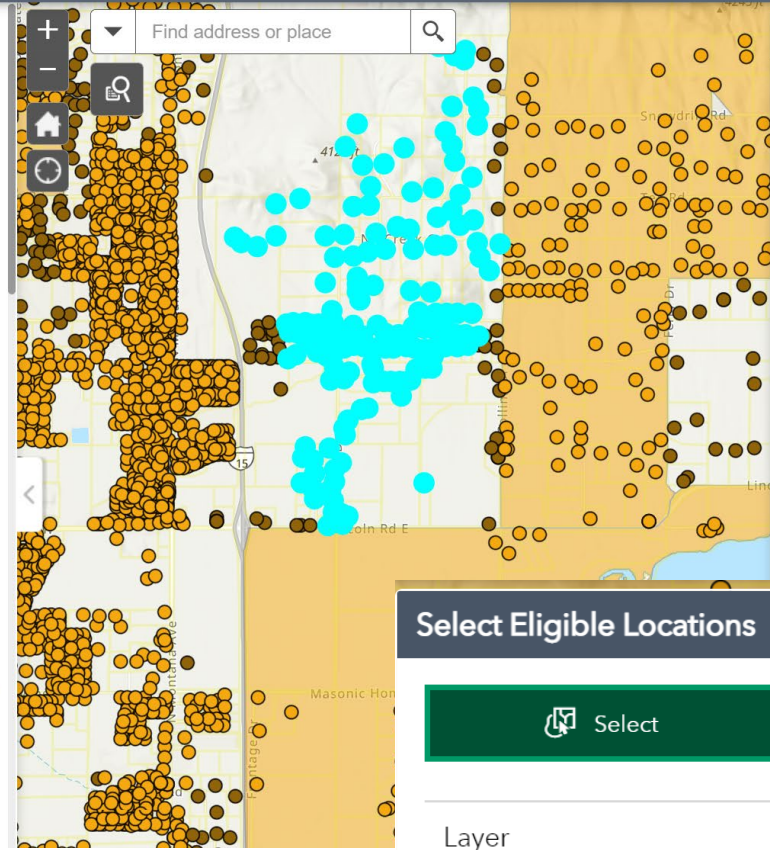
- Served

FCC Connect America Fund (CAF)

- Served
- Unserved

Description

The Montana Broadband Grant Applicant/Challenge tool was created for the Montana ConnectMT program. Additionally, this map includes "served" locations which have been updated based on ISP information or they were awarded with USDA ReConnect, FCC RDOF funding, or CAF funding for terrestrial based broadband.



Select Eligible Locations

Select Clear

Layer

- Locations 156



Select Eligible Locations

Select Clear

Layer

- Locations 156

2022 Montana Broadband Grant Applicant / Challenge Map



2022 Montana Broadband Grant Applicant/Challenge Tool

Locations

- Frontier
- Served
- Underserved
- Unserved

FCC Rural Digital Opportunity Fund (RDOF)

- Served

USDA ReConnect Loan and Grant Program

- Served

FCC Connect America Fund (CAF)

- Served
- Unserved

Find address or place

Select Eligible Locations

Select Clear

Layer

Locations 156

112.012 46.709 Degrees

1mi

EST. NASA, NGA, US

Locations Counties Tribal Lands Building Footprints Parcel Boundaries FCC Rural Digital Opportunity Fund (RDOF) USDA ReConnect Loan and

Options Filter by map extent Zoom to Clear selection Refresh

OBJECTID	ADDRESS ID	ADDRESS	UNIT	CITY	STATE CODE	ZIPCODE	BUILDING	COUNTY
15232	I4auNQ1twxhnfJC	1968 WOOTEN RD		HELENA	MT	59602-8981		Lewis and Clark

156 features 156 selected

Description

The Montana Broadband Grant Applicant/Challenge tool was created for the Montana ConnectMT program. Additionally, this map includes "served" locations which have been updated based on ISP information or they were awarded with USDA ReConnect, FCC RDOF funding, or CAF funding for terrestrial based broadband.

In order for a location to be eligible for the ConnectMT program funding, the location must meet the following



2022 Montana Broadband Grant Applicant / Challenge Map

2022 Montana Broadband Grant Applicant/Challenge Tool

Locations

- Frontier
- Served
- Underserved
- Unserved

FCC Rural Digital Opportunity Fund (RDOF)

- Served

USDA ReConnect Loan and Grant Program

- Served

FCC Connect America Fund (CAF)

- Served
- Unserved

Select Eligible Locations

Select Clear

Layer

Locations 156

Description

The Montana Broadband Grant Applicant/Challenge tool was created for the Montana ConnectMT program. Additionally, this map includes "served" locations which have been updated based on ISP information or they were awarded with USDA ReConnect, FCC RDOF funding, or CAF funding for terrestrial based broadband.

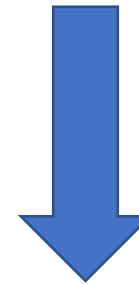
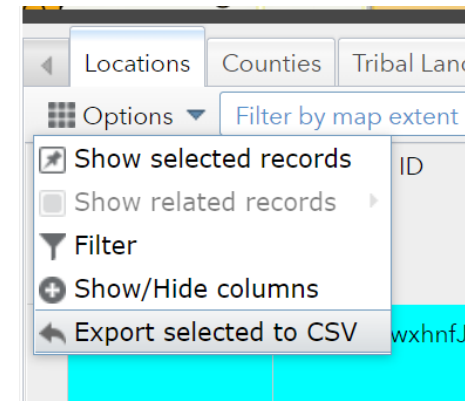
In order for a location to be eligible for the ConnectMT program funding, the location must meet the following

OBJECTID	ADDRESS ID	ADDRESS	UNIT	CITY	STATE CODE	ZIPCODE	BUILDING	COUNTY
15232	I4auNQ1twxhnfJC	1968 WOOTEN RD		HELENA	MT	59602-8981		Lewis and Clark

156 features 156 selected



2022 Montana Broadband Grant Applicant / Challenge Map



	A	B	C	D	E	F	G	H	I	J	K	L	M	N	O	P	Q	R	
1	OBJECTID	ADDRESS	ADDRESS	UNIT	CITY	STATE	COI	ZIPCODE	BUILDING	COUNTY	CLASSIFIC	ASSESSME	FEDERAL	FEDERAL	FEDERAL	SERVICEA	FULL ADD	x	y
2	15232	I4auNQ1t	1968 WOOTEN RD		HELENA	MT		59602-8981		Lewis and	Unknown, Rural/Agricultural-Vacant Land				Unserved	1968 WOC	-111.991	46.7215	
3	30193	I4avcQ38\	2074 WOOTEN RD		HELENA	MT		59602-9297		Lewis and	Residentia Rural/Agricultural Residence				Unserved	2074 WOC	-111.984	46.7216	
4	40398	I4ahAwYU	5582 GLASS DR		HELENA	MT		59602-5603		Lewis and	Residentia Mobile/Manufactured Home (regardless c				Unserved	5582 GLA	-112.001	46.7078	
5	55173	I4ahyglyN	5628 HA FER LN		HELENA	MT		59602-5802		Lewis and	Residentia Rural/Agricultural Residence				Unserved	5628 HA FER	-112.003	46.7079	
6	70244	I4avcAND	1897 WOOTEN RD		HELENA	MT		59602-9296		Lewis and	Residentia Rural/Agricultural Residence			Unserved	Unserved	1897 WOC	-111.995	46.7204	
7	70348	I4at9gK_zl	2122 WOOTEN RD		HELENA	MT		59602-8918		Lewis and	Residentia Rural/Agricultural Residence				Unserved	2122 WOC	-111.982	46.7214	
8	75233	I4au8Qkff	6400 SLEEPING GIAN		HELENA	MT		59602-9169		Lewis and	Residentia Rural/Agricultural Residence				Unserved	6400 SLEE	-111.985	46.7382	

2022 Montana Broadband Grant Applicant / Challenge Map



2022 Montana Broadband Grant Applicant/Challenge Tool

Locations

- Frontier
- Served
- Underserved
- Unserved

FCC Rural Digital Opportunity Fund (RDOF)

- Served

USDA ReConnect Loan and Grant Program

- Served

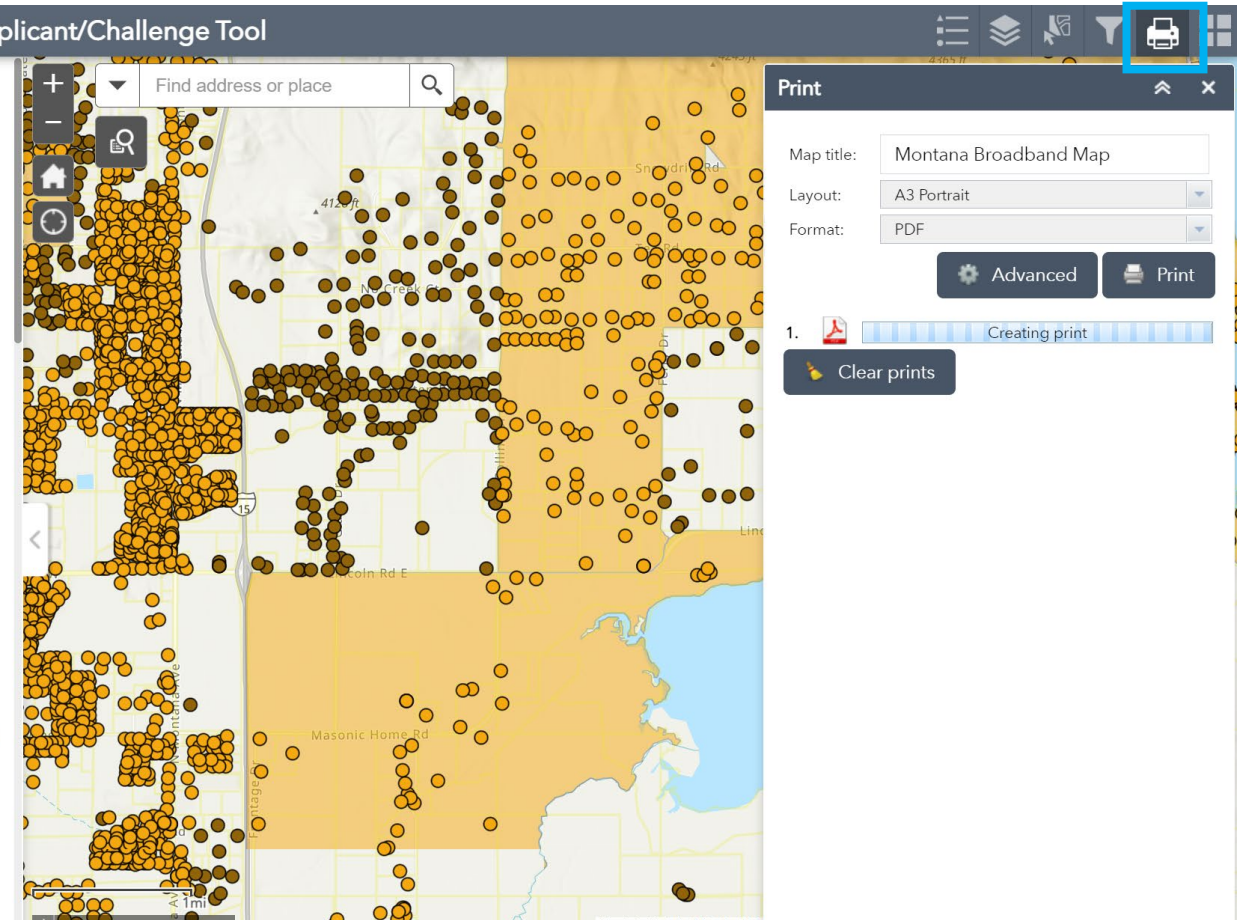
FCC Connect America Fund (CAF)

- Served
- Unserved

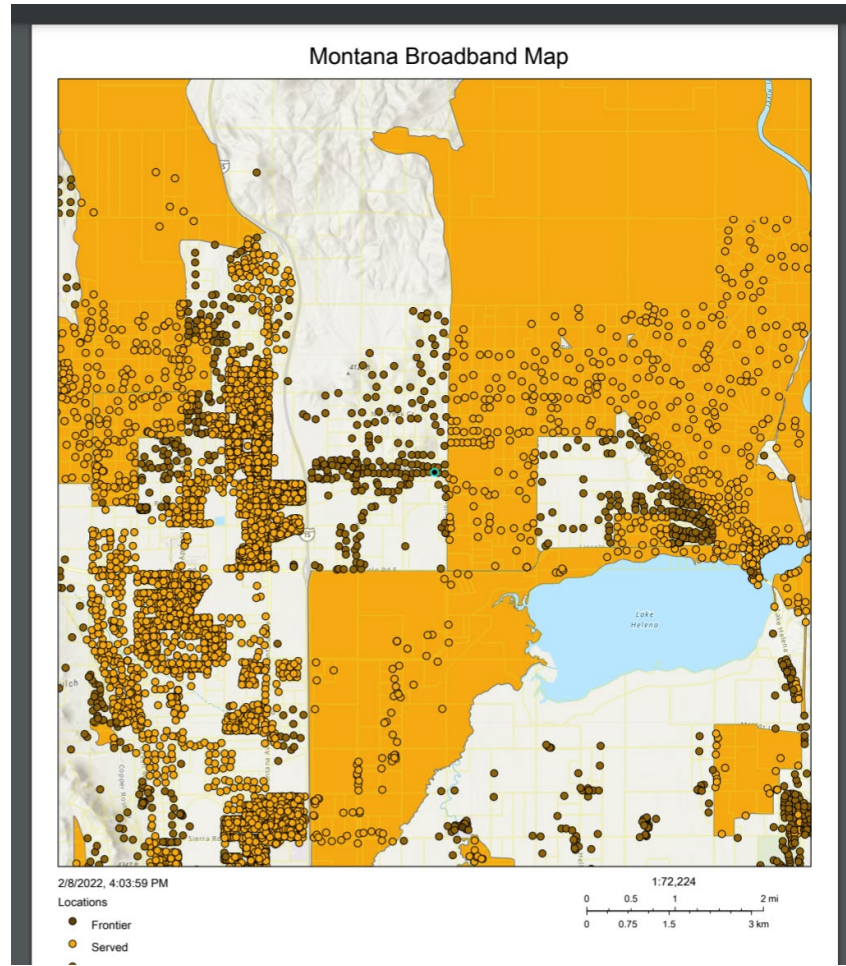
Description

The Montana Broadband Grant Applicant/Challenge tool was created for the Montana ConnectMT program. Additionally, this map includes "served" locations which have been updated based on ISP information or they were awarded with USDA ReConnect, FCC RDOF funding, or CAF funding for terrestrial based broadband.

In order for a location to be eligible for the ConnectMT program funding, the location must meet the following



2022 Montana Broadband Grant Applicant / Challenge Map



2022 Montana Broadband Grant Applicant / Challenge Map



2022 Montana Broadband Grant Applicant/Challenge Tool

Locations

- Frontier
- Served
- Underserved
- Unserved

FCC Rural Digital Opportunity Fund (RDOF)

- Served

USDA ReConnect Loan and Grant Program

- Served

FCC Connect America Fund (CAF)

- Served
- Unserved

Description

The Montana Broadband Grant Applicant/Challenge tool was created for the Montana ConnectMT program. Additionally, this map includes "served" locations which have been updated based on ISP information or they were awarded with USDA ReConnect, FCC RDOF funding, or CAF funding for terrestrial based broadband.

In order for a location to be eligible for the ConnectMT

ID	ADDRESS	UNIT	CITY	STATE CODE	ZIPCODE	BUILDING	COUNTY
wxhmfJC	1968 WOOTEN RD		HELENA	MT	59602-8981		Lewis and Clark

2022 Montana Broadband Grant Applicant / Challenge Map



Filter

+ Add expression + Add set

Display features in the layer that match the following expression

SERVICEABILITY (St) is any of 3 selected

Case sensitive

Search

- Frontier
- Served
- Underserved
- Unserved

OK Cancel

nt/Chall									
T									
"serve									
ed on ISP									
JSDA									
Funding for	15232	I4auNQ1twxhnfJC	1968 WOOTEN		HELENA	MT		59602-8981	

2022 Montana Broadband Grant Applicant / Challenge Map



2022 Montana Broadband Grant Applicant/Challenge Tool

Locations

- Frontier
- Served
- Underserved
- Unserved

FCC Rural Digital Opportunity Fund (RDOF)

- Served

USDA ReConnect Loan and Grant Program

- Served

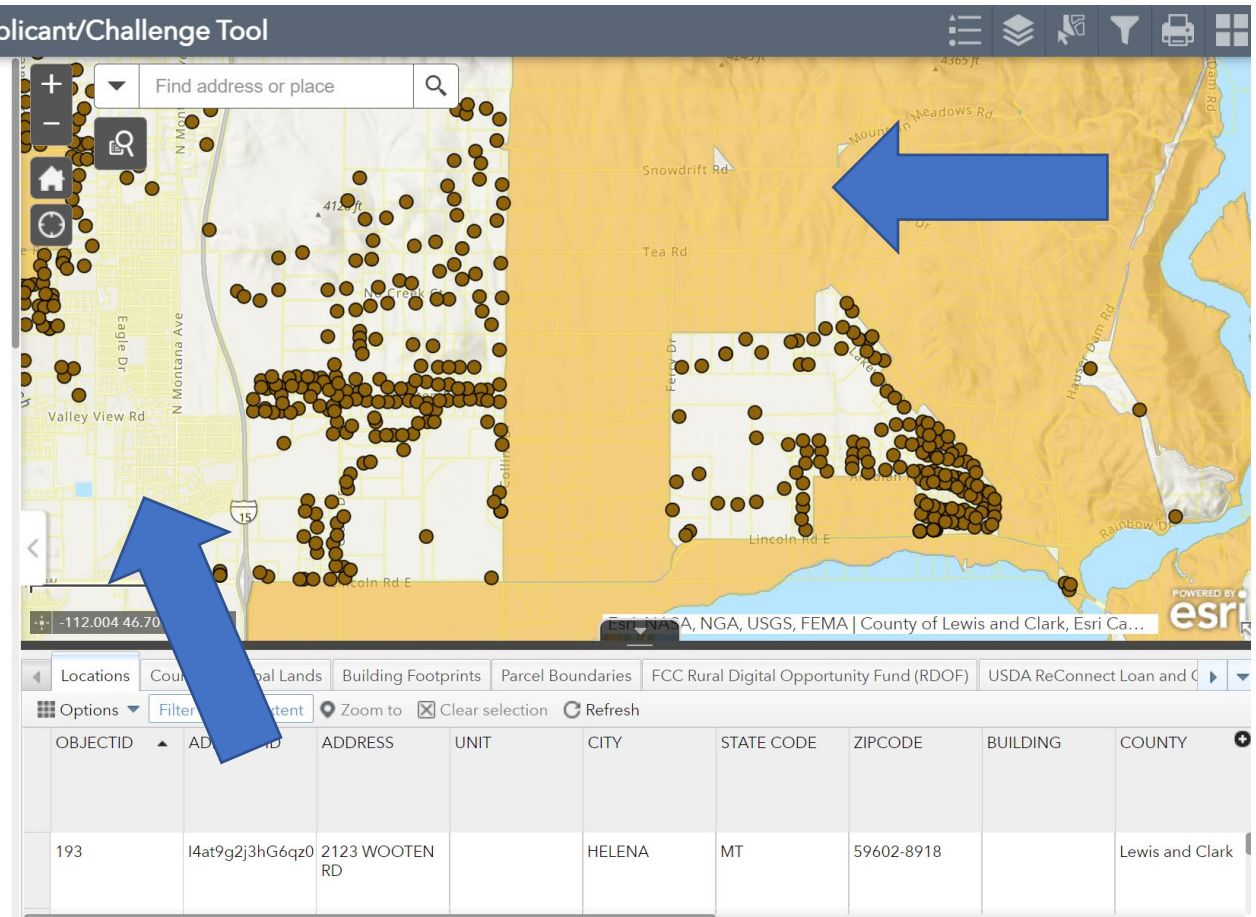
FCC Connect America Fund (CAF)

- Served
- Unserved

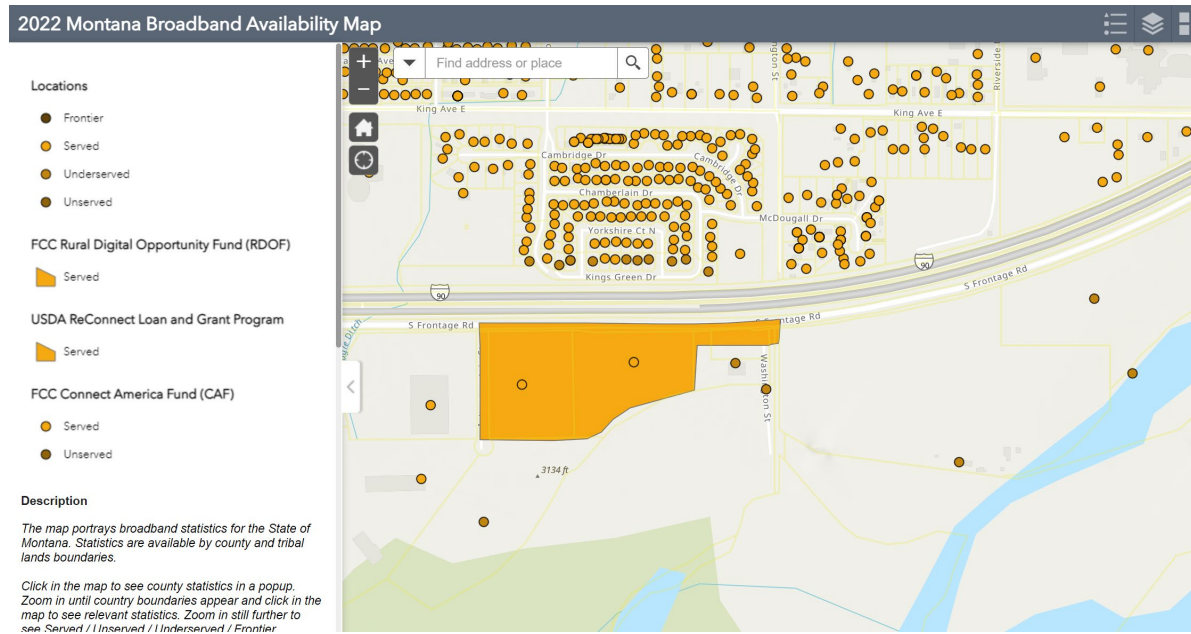
Description

The Montana Broadband Grant Applicant/Challenge tool was created for the Montana ConnectMT program. Additionally, this map includes "served" locations which have been updated based on ISP information or they were awarded with USDA ReConnect, FCC RDOF funding, or CAF funding for terrestrial based broadband.

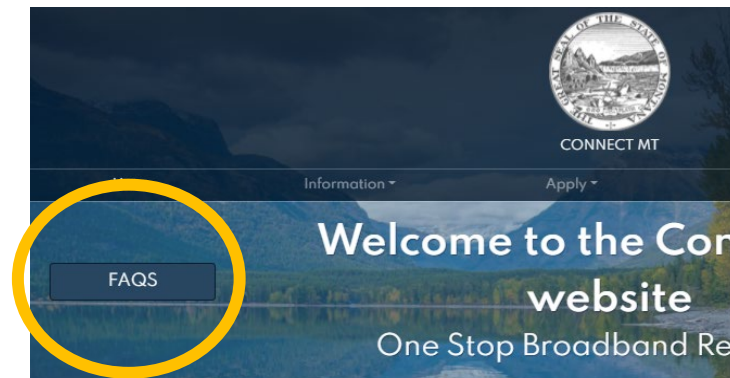
In order for a location to be eligible for the ConnectMT program funding, the location must meet the following



Map Additional Information



Slide 33



- **FAQ Link for Map questions**
- **Connectmt.mt.gov - FAQ link**

OKTA Registration for Map Access



Application Information

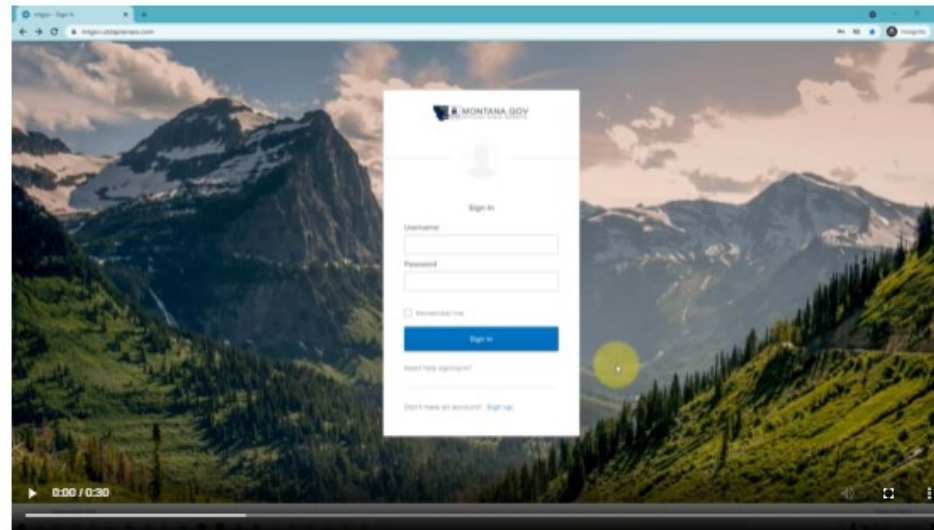
> [Application Guides](#)

> [Broadband Application](#)

▼ [Okta Account Information](#)

Prior to requesting access to the Montana Broadband Application Map, users must have an Okta account. You can sign in to <https://login.mt.gov> in any of these ways:

- If this is your first time signing in, you may be able to sign in with your existing ePass Montana login email address, or
- By creating a new account through <https://login.mt.gov>



For additional assistance with Okta, you can visit <https://okta.mt.gov/Help>.

> [Map Access Requests](#)

> [Application Map](#)

- OKTA is the single sign-on for the State of Montana
- Go to [Connectmt.mt.gov](https://connectmt.mt.gov) – click on Apply Tab – instructions and video provided to guide through registering for account on [Login.mt.gov](https://login.mt.gov)



Slide 34

Request Map Access



Application Information

- > [Application Guides](#)
- > [Broadband Application](#)
- > [Okta Account Information](#)
- ▼ [Map Access Requests](#)

To request access to the Montana Broadband Application Map, please submit the form below with the necessary information. Requests will be reviewed by the Broadband team as quickly as possible.

Broadband Map Access Request

Name *

<input type="text"/>	<input type="text"/>
<small>First Name</small>	<small>Last Name</small>

Email *

Organization *

Position within Organization *

[Submit Request](#)



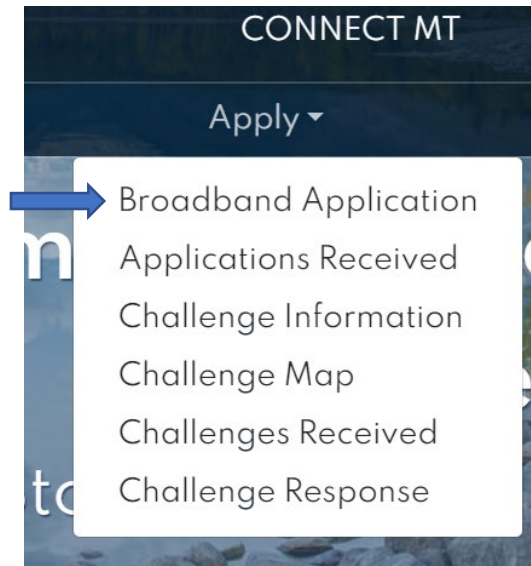
Slide 35

- From the Apply Section of conectmt.mt.gov – click on the next link “Map Access Requests”
- Complete and Submit – you will receive a notification once your request has been approved.



Registering with Website

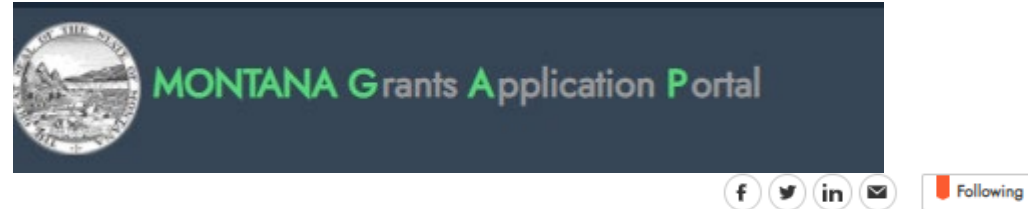
<https://www.covidreliefmt.org/submit>



Slide 36

- Clicking “Broadband Application” will bring applicant to Montana Grant Application Portal
- Registration will be prompted and will redirect applicant to application upon completion
- Application is supported by Submittable - so if you already have an account with Submittable for other grants, use the same log in

Online Application



ARPA Broadband Infrastructure
Ends on April 8, 2022

Background Information

Montana is committed to fulfill the purpose of the American Rescue Plan Act's directive for the expansion of broadband Internet access to Montana's regions and locals that remain unserved or underserved. The Department of Administration (DOA) has established the ConnectMT ("Program") under the "*Connect Montana Act*", SB 297 to oversee the operation of the award allocations process. To review more information about the application, scoring and challenge processes, please go to <https://connectmt.mt.gov/>.



Slide 37

- Review Application Guidance FIRST
- Gather the appropriate data and documentation
- It is recommended to draft narratives outside of the Submittable online application portal.
- Click SAVE after completing significant amounts of work – data may be lost and require a restart of application
- When ready to submit, copy and paste work into Submittable grant application portal

Online Application - Continued



- Applicants can only complete one application at a time
- If your organization intends to submit multiple applications for different projects, your options are:
 - Complete one application at a time / Submit / start new application, or
 - Different individuals from the organization can initiate different applications
 - Collaboration of multiple people on applications is an option within the system

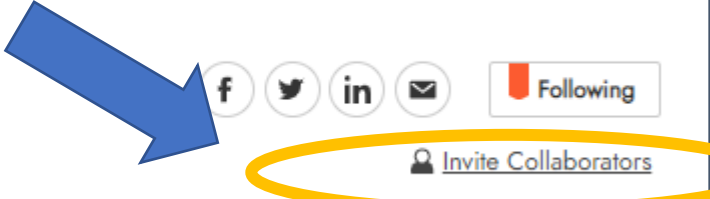


Slide 38

Online Application - Continued



ARPA Broadband Infrastructure



Invite Collaborators

Add team member email addresses below to collaborate with each other in real-time. Team members will receive a link and have access to the form

- You may Invite Collaborators to help work on the application together
- Only the person that initiated the application can click “Submit” to finalize the submission



Eligibility Questions

Notice of Application Guidance

Before completing your application, please review the [Application Guidance](#).

I certify that I am an eligible applicant for this program as defined by the Application Guidance. *

- Yes
 No

See [Application Guidance](#) for list of eligible applicants

I certify that my project is located in an unserved or underserved area as defined by the Application Guidance. *

- Yes
 No

I certify that my project costs are eligible as defined by the Application Guidance. *

- Yes
 No

Next



Slide 40

IMPORTANT NOTE:

- Review Application Guidance – see link in application – to determine if eligible to apply and if the project is eligible.
- If you answer “NO” to any of these eligibility questions, a notification will pop up that you are ineligible and you will not be able to continue the application.
- After verifying your eligibility, click “Next”

Application Checklist



Application Checklist

- The checklist provided below is for reference only.
- It is provided to help you prepare and organize the information you need to provide in the application.
- Completion of this checklist is optional and does not reflect in application scoring.

The Broadband Infrastructure application will require at a minimum the following documents:

- Applicant affidavit upload
- Budgeting engineering designs, diagrams, and maps that demonstrate the viability of the proposal project with certification stamps
- Certification from manufacturer or professional engineer of equipment to be utilized
- Certification of professional engineer
- Documentation showing project served unserved or underserved areas



Slide 41

- Application Checklist – optional
- Help you gather and organize data and documents, including budget, SAM.gov registration, SOS.mt.gov registration.

Part I



Broadband Application

Part I - Project Background Information

Project Name *

Applicant Organization Name *

Limit: 250 characters

Applicant Organization's Mailing Address *

Country

Address



Slide 42

- Complete contact information and project background fields

SAM.gov Registration



[Home](#) [Search](#) [Data Bank](#) [Data Services](#) [Help](#)

Getting Started with Registration

This the official U.S. government website for entity registration. Entity registration is FREE.

Before You Get Started

Before you start your registration, there are a few steps you must complete first. Review these steps to help ensure you set aside enough time to complete your registration.



- Provide your 13 digit SAM.gov registration number
- If not registered, go to SAM.GOV to register



Slide 43

SAM.gov Registration



1 Request a DUNS Number

All entities wishing to do business with the federal government must have a unique entity identifier (UEI). Currently, the DUNS number, which is a unique nine-character identification number provided by Dun & Bradstreet (D&B) free of charge, is the official UEI. D&B assigns UEI (DUNS) for each physical location of a business. Requesting a UEI (DUNS) takes about 10 minutes. Receiving a UEI (DUNS) takes 1-2 business days (under normal circumstances) when using the D&B web form.

[Go to D&B web form](#) 



Slide 44

- Request a DUNS number
- Federal site indicates 1-2 days to receive DUNS number

Historical Financial Statements



Historical Financial Statements

1) Provide historical, unqualified CPA compiled, reviewed, or audited financial statements for the applicant organization.

2) Confidential - Yes/No - DO YOU CONSIDER FINANCIAL STATEMENTS CONFIDENTIAL?

- YES - The following question will dictate how these documents are provided. If confidential, answer "Yes" below and follow the link to provide these documents through a secure portal along with any other required information that is considered confidential.
- NO - Answer "No" to the question below and upload the required financial statements.

Financial statements shall include: balance sheets, income statements, and statements of cash flow, or equivalent forms based on the type of organization. Provide 3 years of unqualified CPA compiled, reviewed, or audited historical financial statements or 2 years of unqualified CPA compiled, reviewed, or audited comparative historical financial statements. Demonstrate the overall financial viability of the Applicant by providing the 3 most recent years of unqualified CPA compiled, reviewed, or audited financial statements. The financial statements may be identified and filed as "Confidential Information" and must be appropriately marked as confidential when submitted. Any confidential information should be identified as a separate file. Results from an independent audit may also be provided as supplemental detail, as well as the Applicant's most recent year's federal tax return. If provided these documents should also be submitted and marked as confidential. Supplemental material that may be provided as documentation for this requirement include the following:

- An Applicant that has been designated as an ETC by the Montana Public Utilities Commission (MPUC) may submit the copy of the MPUC Order authorizing the ETC status
- An Applicant that is a borrower in good standing with the Rural Utilities Service (RUS) may submit documentation that supports that designation.
- An Applicant that has a current Montana cable franchise agreement for the proposed communities in the project may submit a list of the communities covered by the franchise with the date of the franchise's most recent agreement or renewal

Do you have any documents considered trade secrets or confidential for this application? *

- Yes
 No

This question requires the response of the Authorized Organization Official.



Slide 45

- Decide if the historical financial statements are considered "confidential" or can be provided as public information
- If you have ANY confidential or trade secret information – this is where you can indicate as such and provide that info via the provided instructions

Confidential Yes?



Do you have any documents considered trade secrets or confidential for this application? *

- Yes
 No

This question requires the response of the Authorized Organization Official.

Confidential Documents Website

- Send Files Here: [File Transfer Service Link](#).
- Submit any required documents for this application, financials, etc your organization considers confidential / trade secrets.
- Instructions: <https://app.mt.gov/epass-idp/portal/instruct.html>
- If you have issues with File Transfer upload/send - Call (406) 444-2000



Slide 46

- If you have confidential / trade secret documents – use the File Transfer Service
- DO NOT UPLOAD confidential / trade secret documents in the application portal

Confidential - No



Do you have any documents considered trade secrets or confidential for this application? *

- Yes
 No

This question requires the response of the Authorized Organization Official.

Financial Documents Upload *

Choose File

Select up to 70 files to attach. No files have been attached yet. You may add 70 more files.

Acceptable file types: .csv, .doc, .docx, .odt, .pdf, .rtf, .txt, .wpd, .wpl, .gif, .jpg, .jpeg, .png, .svg, .tif, .tiff, .epub, .key, .mobi, .mus, .musx, .ppt, .pptx, .sib, .xls, .xlsx, .zip

Upload financial documents. Provide historical, unqualified CPA compiled, reviewed, or audited financial statements.



Slide 47

- If financial documents are not confidential, upload requested documents in this field in the Submittable application form

Part II – Project Location Information



Part II - Project Location Information

Project Location *

Limit: 250 characters

Provide descriptively the geographical area of the proposed project.

County Served by Project (select all that apply) *

- BEAVERHEAD
- BIG HORN
- BLAINE
- BROADWATER
- CARBON
- CARTER
- CASCADE



Slide 48

- Provide requested project location information.
- Select any/all counties that are served by this project.

Map Upload



Map Upload *

Choose File

Select up to 5 files to attach. No files have been attached yet. You may add 5 more files.

Acceptable file types: .csv, .doc, .docx, .odt, .pdf, .rtf, .txt, .wpd, .wpf, .gif, .jpg, .jpeg, .png, .svg, .tif, .tiff, .epub, .key, .mobi, .mus, .musx, .ppt, .pptx, .sib, .xls, .xlsx, .zip

- If providing a GIS shapefile(s), please zip all the files (at a minimum, you **MUST** include files with the .shp, .shx, and .dbf file extensions) and upload as a zip file.

1. Click “Choose File”
2. Select files from your device

Reminder: All GIS shapefiles must be submitted in .zip files



Slide 49

Part III – Project Funding



Part III - Project Funding Information

Project Funding

Allocation Request Amount *

\$ USD

Round to nearest dollar.

Allocation Request as a Percent of Total Project Cost *

%

Enter in the form of a percentage. Do not enter % symbol. System will automatically add the symbol after the data is saved.

Matching Funds Provided by Applicant *

\$ USD

Round to nearest dollar.



Slide 50

- Provide project funding information, including matching funds data

Part IV – Broadband Improvements



Part IV - Broadband Improvements

Anticipated Broadband Improvements

Total Number of Proposed Last Mile Connections *

Choose File

Select up to 5 files to attach. No files have been attached yet. You may add 5 more files.

Acceptable file types: .csv, .doc, .docx, .odt, .pdf, .rtf, .txt, .wpd, .wpl, .gif, .jpg, .jpeg, .png, .svg, .tif, .tiff, .epub, .key, .mobi, .mus, .musx, .ppt, .pptx, .sib, .xls, .xlsx, .zip

[Proposed Last Mile Connections Template](#)

Application Includes: *

- Last Mile Components Only
- Middle Mile Components Only
- Both Last Mile and Middle Mile Components



Slide 51

- Provide Broadband Improvements information

Part V – Community Participation



Part V - Community Participation

Provide Evidence of Community Support for Project *

Choose File

Select up to 70 files to attach. No files have been attached yet. You may add 70 more files.

Acceptable file types: .csv, .doc, .docx, .odt, .pdf, .rtf, .txt, .wpd, .wpl, .gif, .jpg, .jpeg, .png, .svg, .tif, .tiff, .epub, .key, .mobi, .mus, .musx, .ppt, .pptx, .sib, .xls, .xlsx, .zip

Examples include letters endorsing the project and describing the need for broadband improvements from residents, businesses, legislators, congressional representatives, etc.



Slide 52

- Provide Community Support documentation
- Letters of endorsement

Part VI – Project Readiness



Part VI - Project Readiness

Use of Funds

Please use the following https://connectmt.mt.gov/_docs/ConnectMT-Application-Guide.pdf document - starting on pg 14 - for this portion for the application.

Ineligible expenses include:

- Expense prior to award contract execution. The broadband allocation program cannot provide reimbursement for any expenses incurred prior to the date that the allocation contract is executed. Any such expenses may not be included as allocation eligible expenses.
- Video or voice services
- Advertising
- General operations
- Nonbroadband related liabilities of the applicant
- Marketing activities

Recommended minimum budget categories for "Use of Funds" table above are as follows: [Applicant may add other budget categories as needed]

- Construction – Labor – Last Mile
- Construction – Labor – Middle Mile
- Construction - Materials
- Electronics
- Customer Premise Installation – Labor
- Customer Premise – Equipment
- Professional services and engineering

Use of Funds Upload *

Choose File

Upload a file. No files have been attached yet.

Acceptable file types: .csv, .doc, .docx, .odt, .pdf, .rtf, .txt, .wpd, .wpl, .gif, .jpg, .jpeg, .png, .svg, .tif, .tiff, .epub, .key, .mobi, .mus, .music, .ppt, .pptx, .sib, .xls, .xlsx, .zip



Slide 53

- Review Eligible Uses of Funds
- Upload Uses of Funds Document

Project Implementation



Will the Applicant offer the broadband services for a minimum five year period? *

- Yes
 No

Provide documentation that Applicant will offer the broadband service for a minimum of five years. *

Choose File

Upload a file. No files have been attached yet.

Acceptable file types: .csv, .doc, .docx, .odt, .pdf, .rtf, .txt, .wpd, .wpf, .gif, .jpg, .jpeg, .png, .svg, .tif, .tiff

Include estimated subscription take rates for the proposed project area.

Provide the proposed pricing structure [by associated download and upload speeds] for all broadband services to be offered in association with this project. *

Limit: 1500 characters

Demonstrate that speeds meet and exceed Montana law broadband speed requirements. If applicable, include a low-income pricing model. Include provisions that do not include data cap limitations for service and pricing.



Slide 54

- If you answer “yes” to providing broadband services for minimum 5 years – additional field will pop up
- Upload Documentation including estimated subscription take rates for the proposed project area.

Part VII – Project Sustainability



Part VII - Project Sustainability Instructions

Provide technical expertise statement *

Limit: 1500 characters

Provide a narrative statement detailing all the relevant technical expertise of the Applicant; and the Applicant's specific prior experience in providing broadband services in Montana (and in other states, if applicable.)



Slide 55

- Provide requested narrative detailing technical expertise of the applicant and experience
- Note the character limitation
- Do not forget to click "Save Draft" frequently as you continue working through the application

Part VIII – Applicant Affidavit



Part VIII - Applicant Affidavit

Applicant Affidavit Upload *

Select up to 5 files to attach. No files have been attached yet. You may add 5 more files.

Acceptable file types: .csv, .doc, .docx, .odt, .pdf, .rtf, .txt, .wpd, .wpl, .gif, .jpg, .jpeg, .png, .svg, .tif, .tiff, .epub, .key, .mobi, .mus, .musx, .ppt, .pptx, .sib, .xls, .xlsx, .zip

The primary Applicant must provide a signed, dated, and witnessed affidavit or resolution that shows official Applicant support for and approval of the application as well as a commitment to provide the Applicant's matching funding.



Slide 56

Additional Attachments



Other Attachments - Please attach any other attachments relative to your application (if needed)

Choose File

Select up to 50 files to attach. No files have been attached yet. You may add 50 more files.

Acceptable file types: .csv, .doc, .docx, .odt, .pdf, .rtf, .txt, .wpd, .wpf, .gif, .jpg, .jpeg, .png, .svg, .tif, .tiff, .epub, .key, .mobi, .mus, .musx, .j
.zip



Slide 57

- Attach any additional relevant information. This is optional – available for use if needed.
- Please name files descriptive relative to the information provided.

Application Submission



Save and Submit Feature

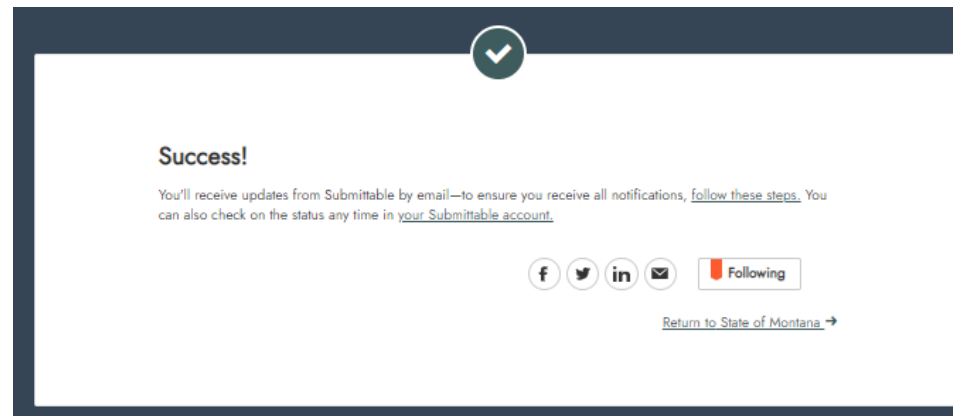
BEFORE YOU SUBMIT

Please Note:

- The verification of receipt will only go to the email address associated with the person that registered for the Submittable account.
- Once you have completed your application, please click “Save” and “Submit”.

Save Draft

Submit Form



Slide 58

- Found at bottom of application
- Do not forget to click “Save Draft” after completing work in application
- Want a printed copy or PDF of your application?
 - Hit “Print” before “Submit”
 - OR – Log back into your Submittable account and download a copy from there

Where to Find Application After Submitted



[Log back into your account at covidreliefmt.org/login](https://covidreliefmt.org/login)

Sign Up Sign In

Email

Password [Forgot?](#)

Sign In



Slide 59

- Found at bottom of application
- Do not forget to click “Save Draft” after completing work in application
- Want a printed copy or PDF of your application?
 - Hit “Print” before “Submit”
 - OR – Log back into your Submittable account and download a copy from there

Where to Find Application After Submitted



[Log back into your account at covidreliefmt.org/login](https://covidreliefmt.org/login)

Sign Up Sign In

Email

Password [Forgot?](#)

Sign In

Submittable Submissions Discover Saved Following

Angie Nelson

My Submissions

All Submissions Active Accepted Declined Withdrawn Saved Drafts Collaborations + Create Universal Submission

received Test-Angle ISP Middle Mile State of Montana - ARPA Broadband Infrastructure 02/07/2022



Slide 60

- Found at bottom of application
- Do not forget to click “Save Draft” after completing work in application
- Want a printed copy or PDF of your application?
 - Hit “Print” before “Submit”
 - OR – Log back into your Submittable account and download a copy from there

Application Guide



Information / Forms & Guides

Information

Statewide Broadband Map

Federal Resources

Announcements

Events

Webinars

Forms & Guides



Slide 61

- [ConnectMT Program Scoring Chart \(as of 1/28/2022\)](#)
- [ConnectMT Application Guide](#)
- [ARPA Broadband Online Application Template \(For Informational Purposes Only\)](#)

Timeline



Date	Item
2/7/22-4/8/22	Statewide Application window
2/10/2022	Application Webinar
4/13/2022	Applications available for public review
4/14/22-5/12/22	30-day Challenge period
5/27/2022	DOA responses to challenges
5/30/22-6/3/22	Applicants open to modify applications
June 2022	Receive ARPA funds from US Treasury
6/4/22-6/30/22	Review eligible applications & determine awards
6/30/2022	Obligate and announce awards



Slide 62

Online Challenge Process

- Refer to [SB 297](#) for more information on the challenge process



Slide 63

Q&A Section



MONTANA.GOV
OFFICIAL STATE WEBSITE

SERVICES AGENCIES LOGIN SEARCH MONTANA.GOV

CONNECT MT

Home Information Apply Awards Auditing & Reporting

Welcome to the Connect MT website
One Stop Broadband Resources

FAQS CONTACT US



DEPARTMENT OF ADMINISTRATION

Broadband - Connect MT and Communications Advisory Commission

The 2021 Legislature passed and Governor Gianforte signed SB297 creating the ConnectMT Act. The Department of Administration (DOA) is responsible for establishing and administering the broadband infrastructure deployment program. The Department will be responsible for receiving and reviewing responsive proposals and awarding contracts. Before awarding any contracts, contracts will be reviewed by the Communications Advisory Commission created by HB632 to oversee Montana's American Rescue Plan Act dollars. The Governor will then approve any proposal recommended for funding by the Department. The Communications Commission's meetings will be noticed on this website.

The DOA is currently building the state's broadband program. Working with the Commission and the

Advisory Commission Members

- Senators Dan Saloman
- Jason Ellsworth
- Janet Ellis
- Representatives Mike Hopkins
- Ed Buttrey
- Katie Sullivan
- Director Misty Ann Giles
- Director Scott Osterman
- Director Scott Sales