



# Montana BEAD Technical Assistance Data Tools for Application Planning: Map & Benchmark

---

July 30, 2024

# DISCUSSION TOPICS

---

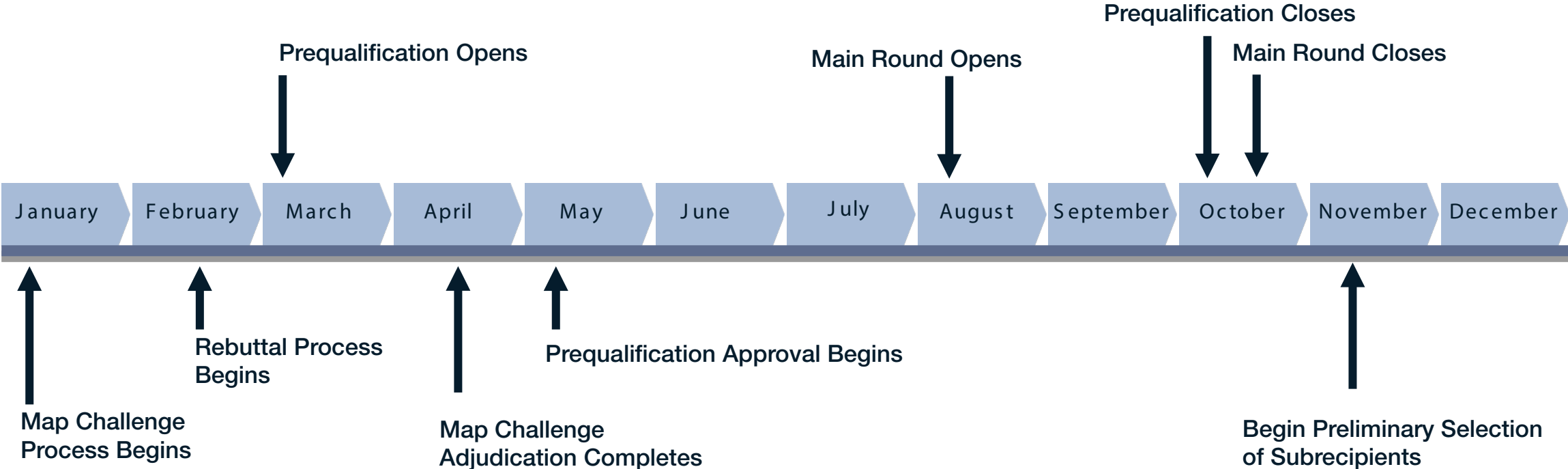
- BEAD Timeline
- Challenge Process Overview
- Benchmarking Data
- The Broadband Availability Map



# 2024 BEAD PROGRAM TIMELINE

## SUBJECT TO NTIA APPROVAL

**\*\*All dates are estimated and subject to change\*\***



# CHALLENGE PROCESS OVERVIEW

---

- To Ensure Eligible Entities identified the full universe of eligible locations for BEAD funding, the ConnectMT Broadband Office (MBO) used the National Broadband Map as a starting point to identify BEAD-eligible locations.
  - Eligible Challengers reviewed existing locations and provided information about the available service to MBO.
  - The MBO reviewed and potentially modified the designation of a location as served, underserved, or unserved and submitted to NTIA for final approval.
- Initial challenge results submitted to NTIA on May 23



# ELIGIBLE BROADBAND SERVICEABLE LOCATIONS HAVE FALLEN OVER TIME

| Status                   | June 30, 2023:<br>Pre-Deduplication<br>(FCC/NTIA Fabric v3.2) | January 2024:<br>Post-Deduplication<br>(NBAM program, Connect MT,<br>ARPA) | May 2024:<br>Post Challenge |
|--------------------------|---|--|-----------------------------|
| Served                   | 345,871   | 410,844  | 421,739                     |
| Underserved              | 47,088  | 22,669   | 18,321                      |
| Unserved                 | 95,085  | 54,531   | 47,984                      |
| TOTAL LOCATIONS          | 488,044   | 488,044  | 488,044                     |
| TOTAL ELIGIBLE LOCATIONS | 142,173   | 77,200   | 65,167                      |

**\*\*Per NTIA instructions, Initial Proposal Volume II included total number of un- and underserved locations (without accounting for enforceable commitments) using the numbers from the Eligible Entity Planning Toolkit.\*\***



# WHAT IS BENCHMARKING

---

- **Benchmark Reference Price:** A reference price set for each Census Block Group (CBG) for the provision of broadband to all unserved and underserved Broadband Serviceable Locations within the CBG.
- Set by the State, the benchmark is used as an objective reference against which to score applications, incentivizing minimum BEAD outlays per CBG.
- The reference funding benchmarks do not represent the actual cost for an ISP to deploy broadband service to CBGs, and ISP bids can be above or below the benchmarks based on factors such as existing infrastructure, business plans, and expected competition.



# EASILY CONFUSED PHRASES

---

## “BENCHMARK REFERENCE PRICE” & “EXTREMELY HIGH COST PER LOCATION THRESHOLD PRICE”

Both are referenced in Initial Proposal Volume II

- **Benchmark Reference Price:**
  - **Used as objective reference against which to score applications, incentivizing minimum BEAD outlays per CBG.**
  - **Provided prior to the Main Round so that all applicants and stakeholders could understand how applications will be evaluated.**
- **Extremely High Cost per Location Threshold Price:**
  - **Maximum BEAD subsidy available per location used in the funding and negotiation process, allowing locations that cannot be funded for this price to be served using other technologies (e.g. satellite).**
  - **Calculated after all priority and non-priority applications are received.**



# REFERENCE FUNDING BENCHMARK

| Information         | Description   |
|---------------------|---|
| Purpose             | The reference funding benchmark calculated for each CBG primarily serves as an objective reference against which individual applications can be scored equitably.   |
| Notes               | If a CBG in the accompanying dataset does not have a "benchmark" value, there are no eligible BSLs in the CBG.  |
| Version             | Preliminary Data  |
| Publish Date        | Thursday, July 18, 2024   |
| Summary Statistics  | Description   |
| Eligible Locations  | There are 65,167 eligible locations (unserved and underserved) for the purposes of the BEAD program.  |
| CBGs                | 520 of 900 CBGs in the state of MT have eligible BSLs   |
| Data Field          | Description   |
| cbg_id              | Census Block Group ID   |
| county_name         | County associated with the CBG  |
| benchmark           | Reference Funding Benchmark for the CBG. This value is used as part of the application scoring to calculate the BEAD outlay.  |
| high_cost_cbg       | Indicates CBGs that are designated high cost by NTIA. These CBGs do not require the 25% match.  |
| num_bsl_unserved    | Number of Broadband Serviceable Locations unserved in the CBG.  |
| num_bsl_underserved | Number of Broadband Serviceable Locations underserved in the CBG.   |
| num_cai_unserved    | Number of Community Anchor Institutions unserved in the CBG.  |
| num_cai_underserved | Number of Community Anchor Institutions underserved in the CBG.   |
| tribal_intersect    | Indicates if the CBG intersects with Federally defined tribal lands (tribal block groups). Applicants are reminded to confirm if proposed projects in these CBGs intersect tribal land and to follow Tribal Consent guidelines if applicable. |

- Reference Funding Benchmarking Spreadsheet:
- This is located under the ISP Service Provider Information Page.
  - <https://connectmt.mt.gov/IIJA/Internet-Service-Provider-Information>
  - This first sheet serves as a key to what is found on the Reference Funding Benchmarking dataset.





# REFERENCE FUNDING BENCHMARK

| cbg_id       | county_name            | benchmark        |
|--------------|------------------------|------------------|
| 300650001001 | Musselshell County     |                  |
| 300359404002 | Glacier County         |                  |
| 300410401001 | Hill County            | \$ 178,800.55    |
| 300530001001 | Lincoln County         | \$ 4,262,345.34  |
| 300530004013 | Lincoln County         | \$ 164,707.82    |
| 300670004002 | Park County            |                  |
| 300670004003 | Park County            | \$ 133,500.00    |
| 300650001002 | Musselshell County     |                  |
| 300670004005 | Park County            |                  |
| 300670004006 | Park County            |                  |
| 300490001001 | Lewis and Clark County | \$ 3,407,901.32  |
| 300670005002 | Park County            | \$ 11,888,723.29 |
| 300439622021 | Jefferson County       | \$ 4,972,794.07  |
| 300530005001 | Lincoln County         | \$ 18,869.49     |
| 300690001001 | Petroleum County       |                  |
| 300439622022 | Jefferson County       | \$ 3,663,430.68  |
| 300530005002 | Lincoln County         | \$ 217,029.45    |
| 300310005021 | Gallatin County        | \$ 519,000.00    |
| 300439622023 | Jefferson County       | \$ 310,016.86    |
| 300479403061 | Lake County            | \$ 539,597.83    |

Reference Funding Benchmarking Spreadsheet:

- This data sheet includes a breakdown of each CBG including their county, benchmark price, number of high-cost locations, unserved and underserved locations (BSLs and CAIs).



# THE BROADBAND AVAILABILITY MAP

---

- The Broadband Availability Map is the outcome of Montana's BEAD Challenge process, and it identifies which locations within Census Block Groups (CBGs) are eligible for funding under the BEAD program.
- Each CBG outlines the number of served, unserved, and underserved locations, the total number of locations, the benchmarking reference price, and what percentage of the CBG is eligible for BEAD funding.
- This map is a resource for applicants as they prepare their applications for the BEAD program.



# BROADBAND AVAILABILITY MAP

MONTANA.GOV  
OFFICIAL STATE WEBSITE

SERVICES AGENCIES LOGIN SEARCH MONTANA.GOV

## ConnectMT Broadband Program

Home General Information ▾ ARPA ▾ IIJA/BEAD ▾ Events ▾ Contact Use of Cookies and Google Analytics

Funding  
FAQ  
Internet Service Provider Information  
Resources  
IIJA Map

### BEAD Prequalification

The Montana Broadband Office (MBO) is preparing to launch the Prequalification Round for the Broadband Equity Access and Deployment (BEAD) Program, aligning with the nationwide effort to provide equitable access to high-speed internet.

Early involvement will help gauge the scope of the Project and allow for smoother coordination as efforts continue to enhance connectivity across all communities in the state. To expedite participation in this initiative, submitting a Prequalification Application through this [link](#) is strongly encouraged.

#### Prequalification Application Materials:

[MT BEAD Prequalification Application Guide](#)

[MT BEAD Prequalification Prior Experience Template](#)

How to access the Connect MT Broadband Availability Map:

- <https://connectmt.mt.gov/>
- Select the IIJA/BEAD Drop Down menu
- Select IIJA Map



# HOW TO ACCESS THE BROADBAND MAP

The screenshot shows the Montana.gov website with the following elements:

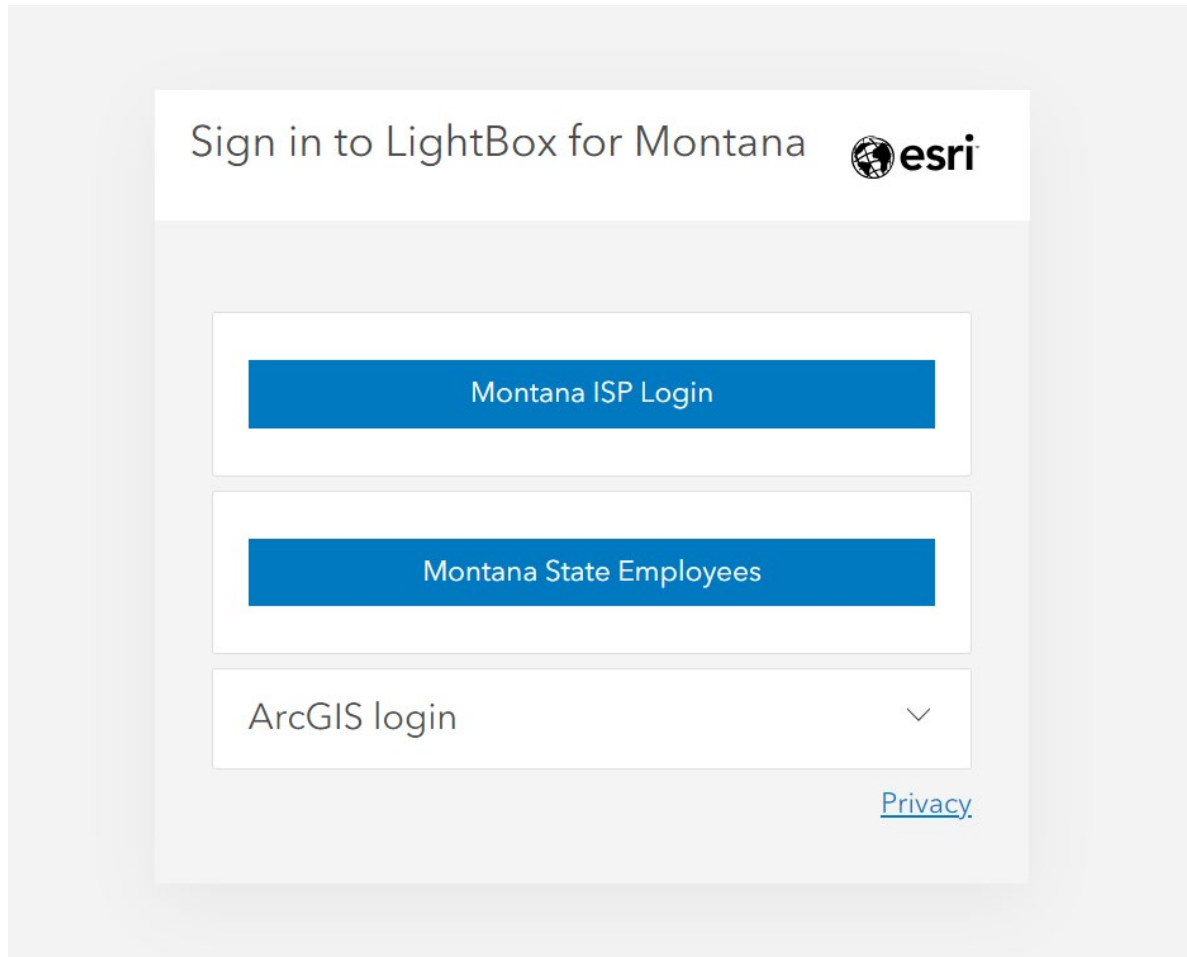
- Header: MONTANA.GOV OFFICIAL STATE WEBSITE, SERVICES, AGENCIES, LOGIN, SEARCH MONTANA.GOV
- Breadcrumbs: IIJA/BEAD / IIJA Map
- Section: IIJA Map
- Section: IIJA Map Description
- Description text: The Broadband Availability Map is the outcome of Montana's BEAD Challenge process, and it identifies which locations within Census Block Groups (CBGs) are eligible for funding under the BEAD program. Each CBG outlines the number of served, unserved, and underserved locations, the total number of locations, the benchmarking reference price, and what percentage of the CBG is eligible for BEAD funding. This map is a resource for applicants as they prepare their applications for the BEAD program.
- Navigation menu with items: State Broadband Availability Map, State Broadband Availability Map, Map Access Request, Map (Okta Account Information), BEAD Application Map, BEAD Application Map.

How to access the Connect MT Broadband Availability Map:

- Select the State Broadband Availability Map drop down menu.
- Select the State Broadband Availability Map.
- The MT Broad Availability Map is publicly available.
- If you are an ISP and would like to download data, you need to register with the state to access the BEAD Application Map.



# MONTANA BEAD APPLICATION MAP

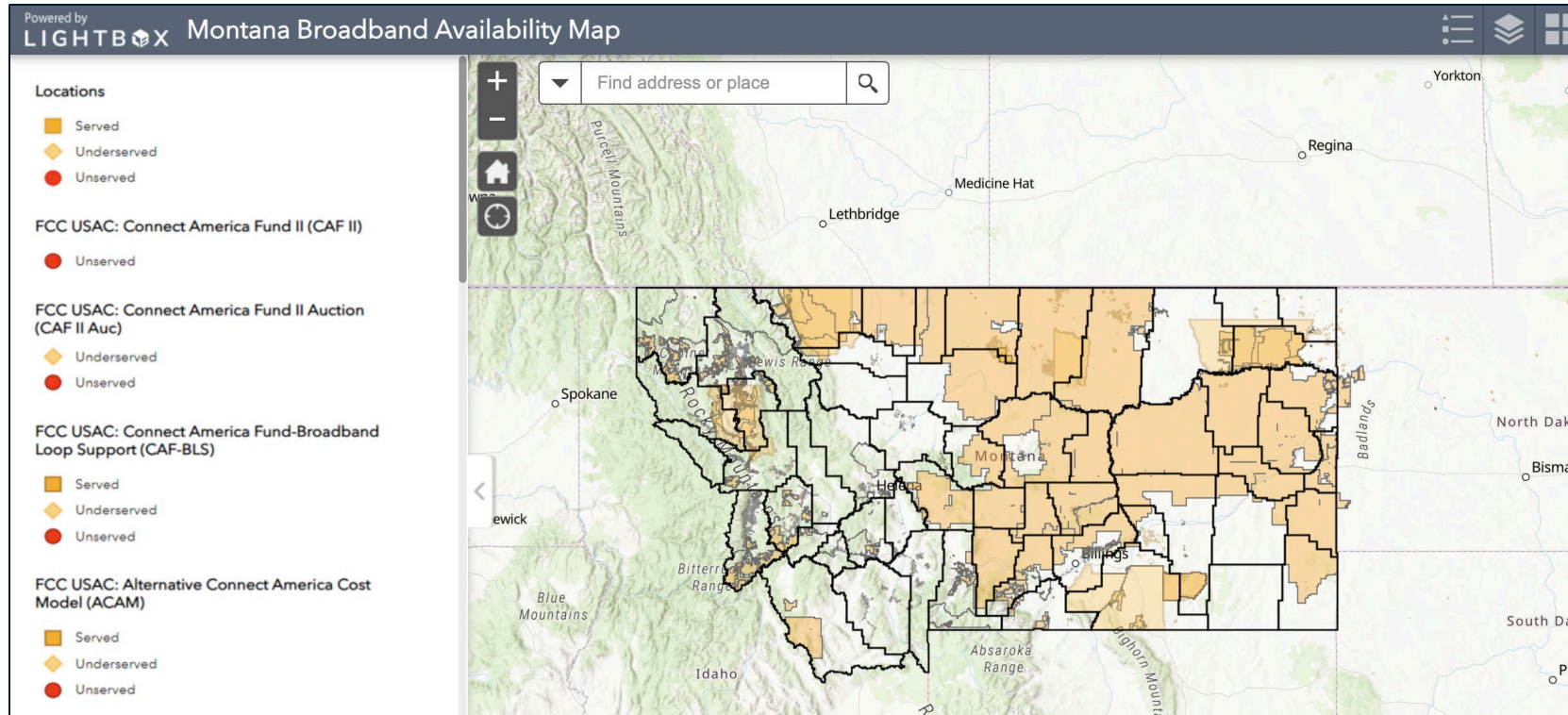


How to request access to the Montana BEAD Application MAP:  
Prior to requesting access to the Montana Broadband Availability Map, users must have an Okta Account.

- Please create a new account through: <https://login.mt.gov> or
- Sign in with your existing ePass Montana login Email address.
- Once you have registered for an Okta account, please submit a Broadband Map Access Request.



# BROADBAND AVAILABILITY MAP

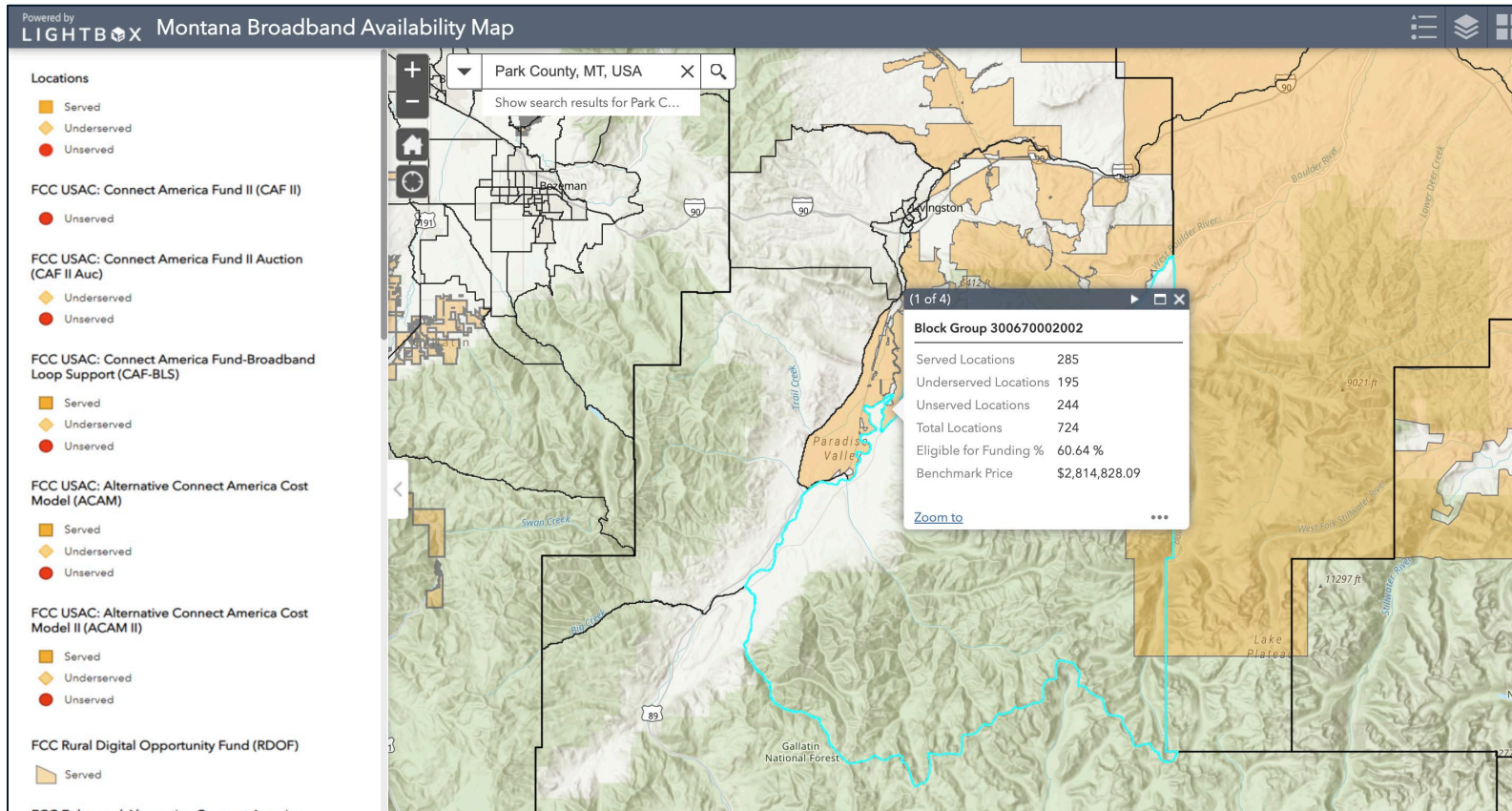


Understanding the Map:

- This map identifies which locations within census block groups (CBGs) are eligible for funding under the BEAD program.
- Each CBG outlines the number of served, unserved, and underserved locations, the total number of locations, the benchmarking reference price, and what percentage of the CBG is eligible for BEAD funding.



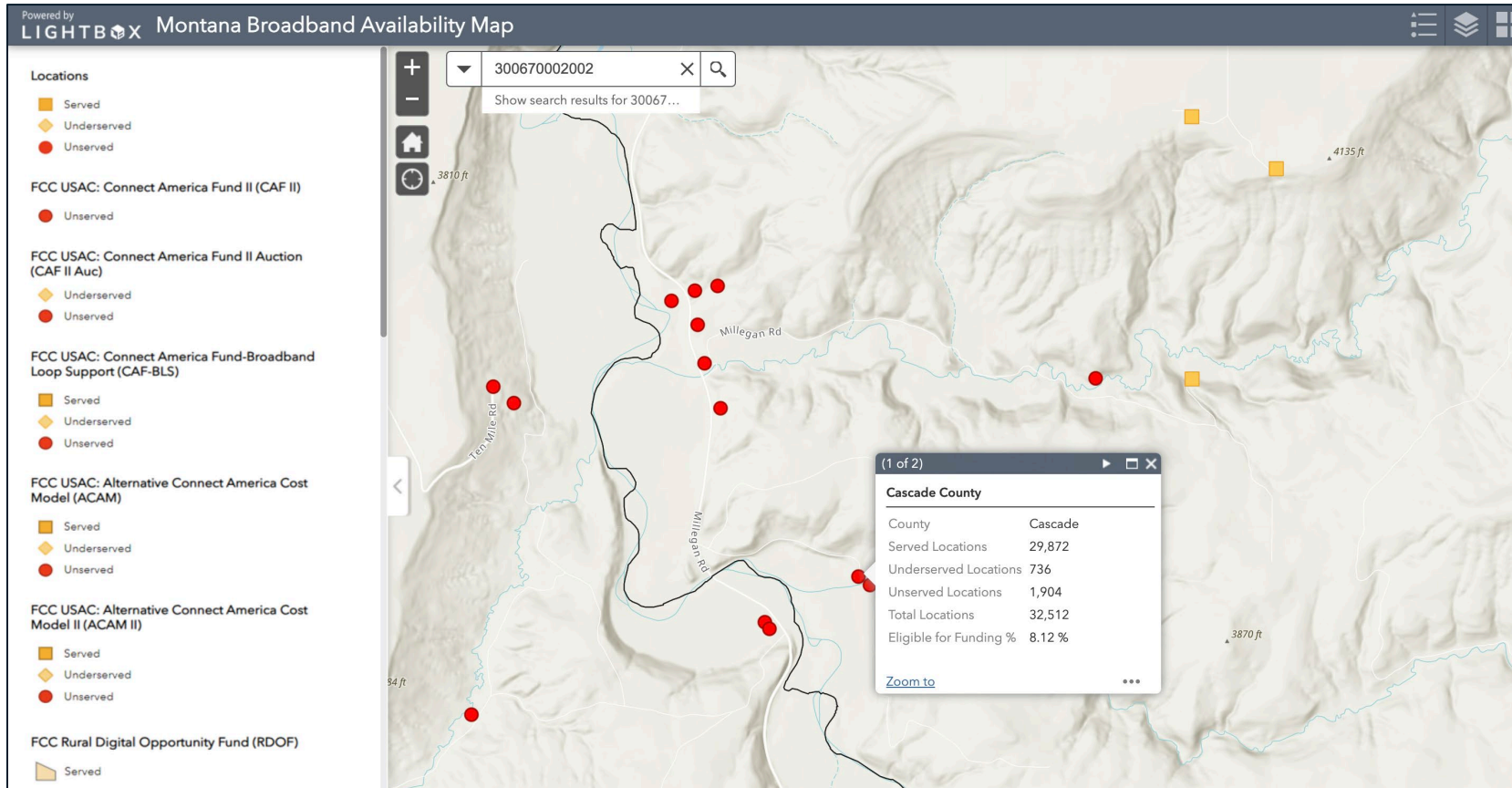
# MAP ZOOM IN: CENSUS BLOCK GROUPS



- Census Block Group 300670002002:
- Served locations: 285
  - Underserved locations: 195
  - Unserved locations: 244
  - Total Locations: 724
  - Eligible for Funding: 60.64%
  - Benchmark Price: \$2,814,828.09



# MAP ZOOM IN: ELIGIBLE LOCATIONS



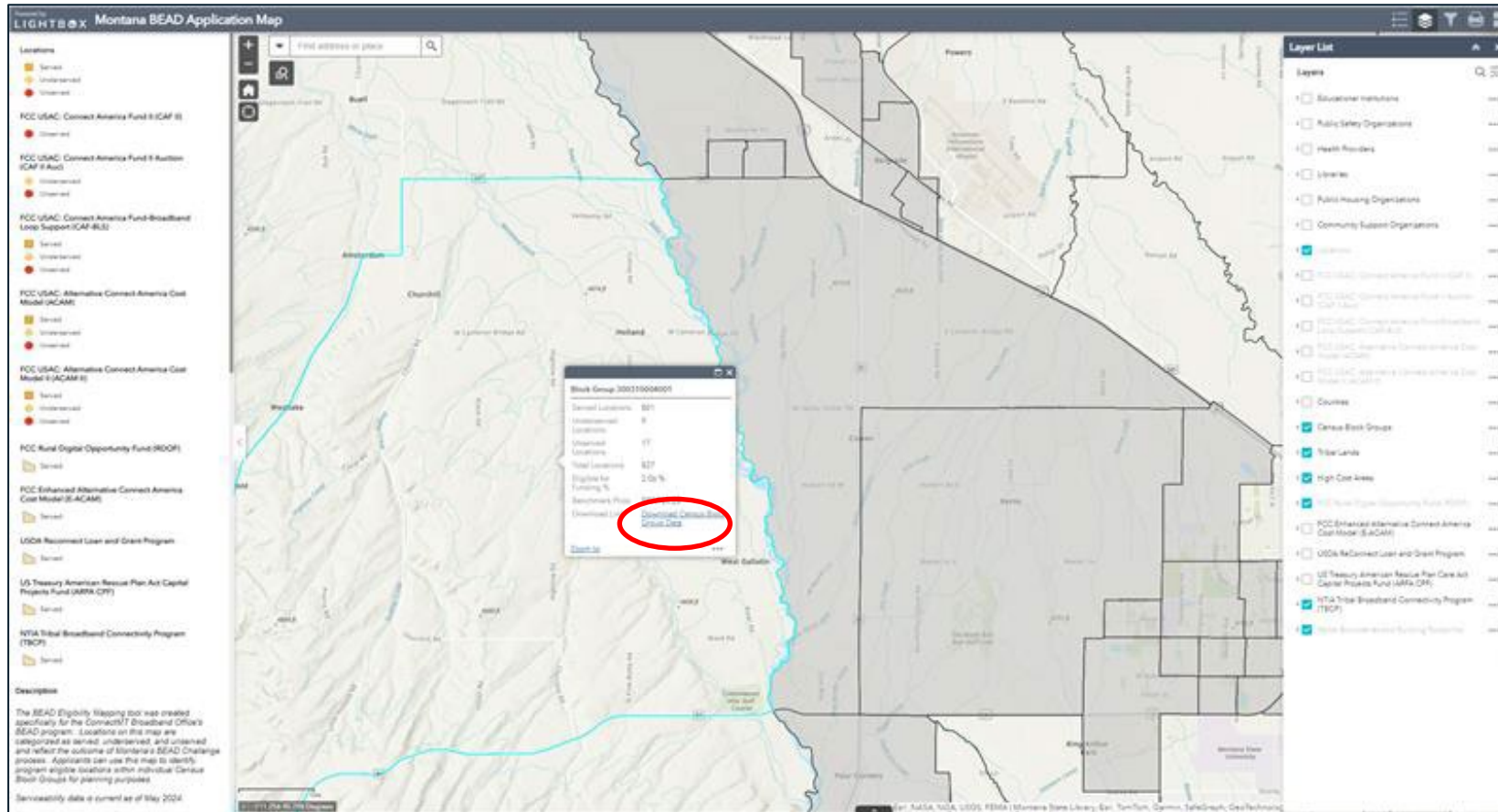
Understanding the Map:

- To view served, underserved, and unserved locations you must zoom into a street level view.
- In order to see the locations layer which represents BEAD Eligible locations consider turning off all funding layers (Using the Layer List Option).
- Then you can view served, unserved, and underserved locations for the BEAD program.





# MAP ZOOM IN: DOWNLOAD DATA



Understanding the Map:

- To download the Census Block Data please log in using your Montana Broadband Access Information.
- You will be able to download specific information related to the CBG.



# BROADBAND MAP Q&A

---



# Q&A



# PROGRAM CONTACTS

---

BEAD Program Information: <https://connectmt.mt.gov>

Initial Proposal Volumes 1 and 2: <https://connectmt.mt.gov/IIJA/Funding>

Frequently Asked Questions: <https://connectmt.mt.gov/IIJA/FAQ>

Technical Assistance Email: [ConnectMTTechAssistance@mt.gov](mailto:ConnectMTTechAssistance@mt.gov)

Moriah Keller - Broadband Coordinator

- Representing the State of Montana
- [moriah.keller@mt.gov](mailto:moriah.keller@mt.gov)
- 406-444-4099

Thom Szucs - Grants Contracts Coordinator

- Representing the State of Montana
- [Thomas.Szucs2@mt.gov](mailto:Thomas.Szucs2@mt.gov)
- 406-444-3393

